



NUOVAGIUNGAS

Nuovagiungas srl - 41043 FORMIGINE (MO) Italy , via A.Moro 26,28 - Formigine MO Italy
Tel.059-578611-Fax 059-570633-Email ng@nuovagiungas.com <http://www.nuovagiungas.com>

SECT.

b

Nuovagiungas Catalogue



GIUNTI ISOLANTI MONOLITICI
MONOLITHIC INSULATING JOINTS

Utenza
Meter service

PN10

Giunti isolanti di utenza
UNI 10284

Meter service insulating joints
UNI 10284

Classe: PN10 / MOP10

Class: PN10 / MOP10

Applicazioni principali:
Reti di distribuzione (UNI 9165),
impianti di derivazione del gas
(UNI 9860), impianti a Gas per
uso domestico e similari (UNI
7129-1).

Main applications:
Gas distribution network (UNI 9165),
gas service pipe (UNI 9860), Gas
plants for domestic and similar uses
(UNI 7129-1).



T	R	RT	RP	P	Dove: T=Max temperatura di esercizio R=Resistenza di isolamento in aria a 1000 Volt c.c. RT=Tensione elettrica di prova c.a. RP=Tensione elettrica di perforazione c.a. P=pressione nominale	Where: T=Max operating temperature R=Electric resistance in air at 1000 Volt d.c. RT=Dielectric test a.c. RP=Dielectric strength c.a. P=Nominal pressure
70°C	>100 Mohm	3 KV	>5 KV	10 Bar 1 MPa		
U.R.=55% t=22°C (prove di officina/ factory tests)						

Tipo (per dettagli vedi pubblicazione NG-IJTY-01)

B1:Maschio/Maschio - B2: Maschio/Saldare - B3: Saldare/Saldare - B4: Femmina/Saldare - B5: Maschio/Femmina -B6: Femmina Femmina

Type (for details see Nuovagiungas publication NG-IJTY-01)

B1:Male/Male - B2: Male/Weld - B3: Weld/Weld - B4: Female/Weld - B5: Male/Female -B6: Female Female

B1

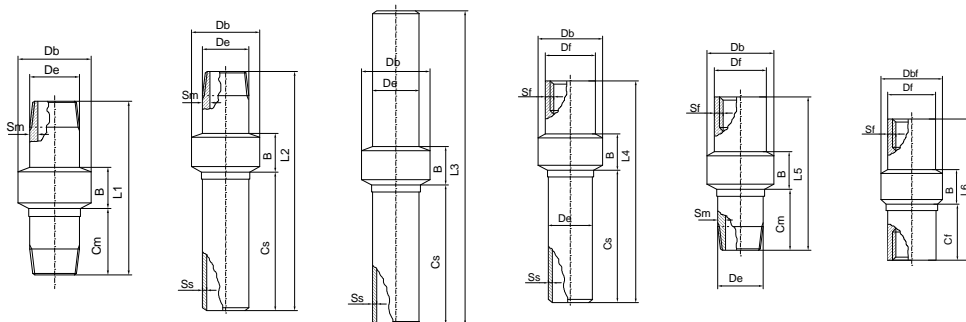
B2

B3

B4

B5

B6



Certificati rilasciati
Released certificates

- ✓ EN10204 3.1
- ✓ EN-UNI-CEI 17050-1
- ✓ CE conformity

ND	DN	De	Df	Db	Dbf	Ss	Sm	Sf	B	Cs	Cm	Cf	L1	L2	L3	L4	L5	L6	Tipo Type	
1/2"	15	21.3	26.6	43	47	3.6	3.6	4	34	92	36	25	115	171	229	157	101	100	B _x	
3/4"	20	26.9	32	49	51	4	4	4	35	99	40	27	126	185	245	171	112	110	B _x	
1"	25	33.4	38	56	57	4	4	4	35	107	52	30	138	193	252	182	127	120	B _x	
1 1/4"	32	42.4	47	66	68	4	4	4	35	115	64	35	155	206	276	198	147	135	B _x	
1 1/2"	40	48.3	53	72	75	4	4	4	37	123	68	35	165	220	288	211	156	145	B _x	
2"	50	60.3	65	85	89	4	4.5	4	42	135	68	39	166	233	308	225	158	150	B _x	
2 1/2"	65	76.1	84	113	-	4.8	4.8	6	65	146	68	-	200	270	350	-	180	-	NG5 B _x	
3"	80	88.9	97	125	-	4.8	4.8	6	65	173	71	-	220	300	400	-	200	-	NG5 B _x	
In.	mm													mm						
Le dimensioni sono a titolo indicativo e suscettibili di variazione come da disegni costruttivi e tolleranze relative										The dimensions are indicative and subject to variation as per construction drawings and relevant tolerances										

Materiale: Acciaio (conforme ai requisiti della UNI10284 e del DM 16/04/2008 , per esempio: EN10208-1 L210 o equivalente/superiore)

Estremità a saldare: EN10208-1/ ISO3183/API 5L

(smusso =30° +5/-0° ; spalla =1.6mm)

Estremità filettate: ISO7/EN10226-1

Norme e codici: UNI 10284, NACE RP0286-86, D.M. 16/04/2008, D.P.R. 23/03/1998 N° 126 - 94/9/CE - Atex - II 2 GD Zona 1 e 21 d T6

A richiesta: 97/23/CE - PED

Materials: Steel (in compliance to UNI10284 and DM 16/04/2008 requirements, i.e.: EN10208-1 grade L210 or equivalent/superior)

Weld ends: EN10208-1/ ISO3183/API 5L

(bevel= 30° +5/-0° root= 1.6mm +/-0.8mm)

Thread ends: ISO7/EN10226-1

Rules and norms: UNI 10284, NACE SP0286, D.M. 16/04/2008, D.P.R. 23/03/1998 N° 126 - 94/9/CE - Atex - II 2 GD Zona 1 e 21 d T6

On request: 97/23/CE - PED

Scheda tecnica / Technical data sheet : NG010-01/C rev.3 issued 18/06/09 pag. 1/1



Nuovagiungas srl
41043 FORMIGINE (MO) Italy via A. Moro 26/28
Tel.059-578611-Fax 059-570633-Email ng@nuovagiungas.com
Stab. 1/PRODUZIONE E MAGAZZINO:via C. Prampolini 30 - 41043 Formigine MO Italy
Stab.2/SEDE LEGALE E PRODUZIONE:via A.Moro 26,28 - 41043 Formigine MO Italy



II 2 GD Zona 1 e 21 d T6
Tech. file N° AX001 (Notified body N°1370)



ISO 9001:2000
Quality management System Approved
Certificate No.: LRC 160036

GIUNTI ISOLANTI MONOLITICI MONOLITHIC INSULATING JOINTS

**Utenza
Meter service**

GRS

**Giunti isolanti di utenza
con valvola a sfera**

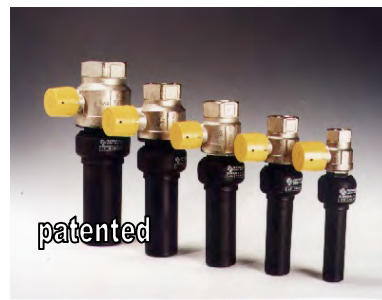
**Meter service insulating joints
with ball valve**

**Classe:
PN10 / MOP10 ACQUA
PN5 / MOP5 GAS**

**Class:
PN10 / MOP10 WATER
PN5 / MOP5 GAS**

**Applicazioni principali:
Reti di distribuzione , impianti di
derivazione del gas , impianti a Gas
per uso domestico e similari;
Reti ed impianti idrici ;
A richiesta fornito per acqua
potabile.**

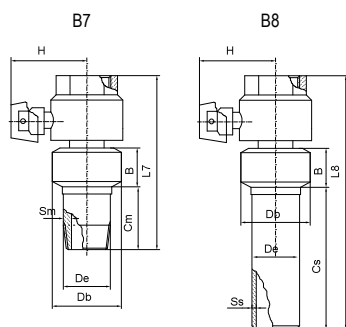
**Main applications:
Gas distribution network, gas service
pipe, Gas plants for domestic and
similar uses;
Water distribution network and plant;
Potable water on request.**



T	R	RT	RP	P	Dove: T=Max temperatura di esercizio R=Resistenza di isolamento in aria a 1000 Volt c.c. RT=Tensione elettrica di prova c.a. RP=Tensione elettrica di perforazione c.a. P=pressione nominale	Where: T=Max operating temperature R=Electric resistance in air at 1000 Volt d.c. RT=Dielectric test a.c. RP=Dielectric strength c.a. P=Nominal pressure
70°C	>100 Mohm	3 KV	>5 KV	10 Bar (water)		
	U.R.=55% t=22°C (prove di officina/ factory tests)			5 Bar (gas)		

**Tipo (per dettagli vedi pubblicazione NG-IJTY-01)
B7: Maschio/Femmina - B8: Femmina/Saldare**

**Type (for details see Nuovagiungas publication NG-IJTY-01)
B7: Male/Female - B8: Female/Weld**



ND	DN	De	Df	Db	Ss	Sm	Sf	B	Cs	Cm	H	L7	L8	Tipo Type	
3/4"	20	26.9	32	49	4	4	4	35	99	40	64	121	180	B _x	
1"	25	33.4	38	56	4	4	4	35	107	52	65	148	203	B _x	
1 1/4"	32	42.4	47	66	4	4	4	35	115	64	80	169	221	B _x	
1 1/2"	40	48.3	53	72	4	4	4	37	123	68	85	190	245	B _x	
2"	50	60.3	65	85	4	4.5	4	42	135	68	95	212	278	B _x	
In.	mm	mm													
Le dimensioni sono a titolo indicativo e suscettibili di variazione come da disegni costruttivi e tolleranze relative								The dimensions are indicative and subject to variation as per construction drawings and relevant tolerances							
Certificati rilasciati / Released certificates															
✓ EN10204 3.1															
✓ EN-UNI-CEI 17050-1															

Materiale: giunto isolante: acciaio / valvola: ottone
Estremità a saldare: EN10208-1/ ISO3183/API 5L
(smusso =30° +5/-0° ; spalla =1.6mm)
Estremità filettate: ISO7/EN10226-1
Norme e codici: Corpo valvola: EN331; corpo giunto: UNI10284; NACE RP0286-86; D.M. 16/04/2008.

Materials: Insulating joint: steel / Ball valve: brass
Weld ends: EN10208-1/ ISO3183/API 5L
(bevel= 30° +5/-0° root= 1.6mm +/-0.8mm)
Thread ends: ISO7/EN10226-1
Rules and norms: Body valve: EN331; Insulating joints body: UNI10284; NACE SP0286; D.M. 16/04/2008.

Scheda tecnica / Technical data sheet : NG010-02/C rev.3 issued 18/06/09 pag. 1/1



NUOVAGIUNGAS
Nuovagiungas srl
41043 FORMIGINE (MO) Italy via A. Moro 26/28
Tel.059-578611-Fax 059-570633-Email ng@nuovagiungas.com
Stab. 1/PRODUZIONE E MAGAZZINO:via C.Prampolini 30 - 41043 Formigine MO Italy
Stab.2/SEDE LEGALE E PRODUZIONE:via A.Moro 26,28 - 41043 Formigine MO Italy



ISO 9001:2000
Quality management System Approved
Certificate No.: LRC 160036

GIUNTI ISOLANTI MONOLITICI
MONOLITHIC INSULATING JOINTS

GAS LINEA
GAS MAIN PIPELINE
PN25

Giunti isolanti di linea
UNI 10285

Main pipeline insulating joints
UNI 10285

Classe: PN25 / MOP25

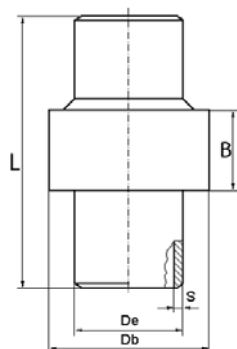
Class: PN25 / MOP25

Applicazioni principali:
Trasporto e distribuzione di GAS
(UNI EN 1594), reti di distribuzione
(UNI 9165), impianti di derivazione
del gas (UNI 9860).

Main applications:
Gas supply system (UNI EN
1594), gas distribution network
(UNI 9165), gas service pipe (UNI
9860).



T	R	RT	RP	P	Dove: T=Max temperatura di esercizio R=Resistenza di isolamento in aria a 1000 Volt c.c. RT=Tensione elettrica di prova c.a. RP=Tensione elettrica di perforazione c.a. P=pressione nominale	Where: T=Max operating temperature R=Electric resistance in air at 1000 Volt d.c. RT=Dielectric test a.c. RP=Dielectric strength c.a. P=Nominal pressure
70°C	>100 Mohm	3.5 KV	>10 KV	25 Bar 2.5 MPa		
	U.R.=55% t=22°C (prove di officina/ factory tests)					



Certificati rilasciati
Released certificates

- ✓ EN10204 3.1
- ✓ EN-UNI-CEI 17050-1
- ✓ CE conformity

ND	DN	De	Materiale tubo Pipe pups mat.	S	L	Db	B	Tipo Type	!
1/2"	15	21.3	Gr.B/L245	3.6	230	49	34	B3	(*)
3/4"	20	26.7	Gr.B/L245	3.9	245	51	35	B3	(*)
1"	25	33.4	Gr.B/L245	3.4	250	67	50	F1/C	(*)
1 1/4"	32	42.4	Gr.B/L245	3.6	300	76	50	F1	(*)
1 1/2"	40	48.3	Gr.B/L245	3.6	300	83	58	F1	(*)
2"	50	60.3	Gr.B/L245	3.9	350	88	60	NG5/C	(*)
2 1/2"	65	76.1	L245	4.8	350	113	65	NG5/C	(*)
3"	80	88.9	Gr.B/L245	4.8	400	125	65	NG5/C	-
4"	100	114.3	Gr.B/L245	4.8	400	150	75	NG5/C	-
5"	125	141.3	Gr.B/L245	4.8	500	191	92	NG5/C	-
6"	150	168.3	Gr.B/L245	5.6	500	215	97	NG5/C	-
8"	200	219.1	Gr.B/L245	6.4	500	273	106	NG5/C	-
10"	250	273	Gr.B/L245	6.4	700	323	116	NG5/C	-
12"	300	323.8	Gr.B/L245	6.4	700	382	154	NG5/C	-
14"	350	355.6	Gr.B/L245	7.1	900	426	180	NG5/B3	-
16"	400	406.4	Gr.B/L245	7.1	900	470	175	NG5/B3	-
18"	450	457.2	Gr.B/L245	7.1	900	518	200	NG5/B	-
20"	500	508	Gr.B/L245	7.1	1000	605	220	NG4/B	-
22"	550	558.8	Gr.B/L245	8	1000	660	234	NG4/B	-
24"	600	609.6	Gr.B/L245	8.8	1000	726	255	NG4/B	-
26"	650	660.4	Gr.B/L245	8.8	1000	766	255	NG4/B	(*)
28"	700	711.2	Gr.B/L245	8.8	1200	830	280	NG4/B	(*)
30"	750	762	Gr.B/L245	8.8	1200	870	280	NG4/B	(*)
In.	mm								

Dimensioni in mm / Dimensions in mm

(*): Diametro non previsto nella UNI 10285.

Tipo: vedi pubblicazione NG-IJTY-01.

Le dimensioni di ingombro, le foto e le figure sono a solo titolo indicativo.

(*) Item not provided in UNI 10285.

Type: please refer to Nuovagiungas publication NG-IJTY-01.

Overall dimensions, drawings and images for illustrative purpose only.

Materiale: Acciaio API 5L / ISO 3183 / EN10208-2
Estremità a saldare: API 5L / ISO 3183 / EN10208-2
(smusso =30° +5/-0° ; spalla =1.6mm)

Norme e codici: UNI 10285, NACE RP0286-86, D.M. 24/11/1984, D.M. 16/04/2008,

D.P.R. 23/03/1998 N° 126 - 94/9/CE - Atex - II 2 GD Zona 1 e 21 d T6

A richiesta: 97/23/CE - PED

Materials: Steel API 5L / ISO 3183 / EN10208-2

Weld ends: API 5L / ISO 3183 / EN10208-2

(bevel= 30° +5/-0° root= 1.6mm +/-0.8mm)

Rules and norms: UNI 10285, NACE SP0286, D.M. 24/11/1984, D.M. 16/04/2008,

D.P.R. 23/03/1998 N° 126 - 94/9/CE - Atex - II 2 GD Zona 1 e 21 d T6

On request: 97/23/CE - PED

Scheda tecnica / Technical data sheet : NG025-01/C rev.2 issued 18/06/09 pag. 1/1



NUOVAGIUNGAS

Nuovagiungas srl

41043 FORMIGINE (MO) Italy via A. Moro 26/28

Tel.059-578611-Fax 059-570633-Email ng@nuovagiungas.com

Stab. 1/PRODUZIONE E MAGAZZINO:via C.Prampolini 30 - 41043 Formigine MO Italy

Stab.2/SEDE LEGALE E PRODUZIONE:via A.Moro 26,28 - 41043 Formigine MO Italy



II 2 GD Zona 1 e 21 d T6
Tech. file N° AX001 (Notified body N°1370)



ISO 9001:2000
Quality management System Approved
Certificate No.: LRC 160036

GIUNTI ISOLANTI MONOLITICI
MONOLITHIC INSULATING JOINTS

LINEA
MAIN PIPELINE
PN25 140°C

Giunti isolanti di linea
TELERISCALDAMENTO

Main pipeline insulating joints
DISTRICT HEATING
PLANT

Classe: PN25/ MOP25

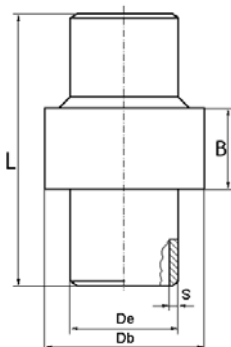
Class: PN25 / MOP25

Applicazioni principali:
Trasporto e distribuzione acqua
surriscaldata e vapore, impianti
telerriscaldamento

Main applications:
Hot water and steam supply
system / distribution network,
district heating plant.



T	R	RT	RP	P	Dove: T=Max temperatura di esercizio R=Resistenza di isolamento in aria a 1000 Volt c.c. RT=Tensione elettrica di prova c.a. RP=Tensione elettrica di perforazione c.a. P=pressione nominale	Where: T=Max operating temperature R=Electric resistance in air at 1000 Volt d.c. RT=Dielectric test a.c. RP=Dielectric strength c.a. P=Nominal pressure
140°C	>100 Mohm	3.5 KV	>10 KV	25 Bar 2.5 MPa		
	U.R.=55% t=22°C (prove di officina/ factory tests)					



Certificati rilasciati
Released certificates

- ✓ EN10204 3.1
- ✓ EN-UNI-CEI 17050-1
- ✓ CE conformity

ND	DN	De	Materiale tubo Pipe pups mat.	S	L	Db	B	Tipo Type
1/2"	15	21.3	Gr.B/L245	3.2	250	60	59	F2
3/4"	20	26.7	Gr.B/L245	3.2	250	65	60	F2
1"	25	33.4	Gr.B/L245	3.4	250	75	60	F2
1 1/4"	32	42.4	Gr.B/L245	3.6	300	83	68	F2
1 1/2"	40	48.3	Gr.B/L245	3.7	300	95	86	F2
2"	50	60.3	Gr.B/L245	3.9	350	114	104	NG5/B (NG5B2)
2 1/2"	65	76.1	L245	5.5	350	132	117	NG5/B (NG5B2)
3"	80	88.9	Gr.B/L245	5.5	500	155	123	NG5/B (NG5B2)
4"	100	114.3	Gr.B/L245	6	500	190	128	NG5/B (NG5B2)
5"	125	141.3	Gr.B/L245	6.5	600	217	148	NG5/B (NG5B2)
6"	150	168.3	X52/L360	7.1	600	248	161	NG5/B (NG5B2)
8"	200	219.1	X52/L360	8.2	600	297	183	NG5/B (NG5B2)
10"	250	273	X52/L360	9.3	800	364	202	NG5/B (NG5B2)
12"	300	323.8	X52/L360	9.5	800	430	223	NG5/B (NG5B2)
14"	350	355.6	X52/L360	12.7	1000	450	210	NG4/B
16"	400	406.4	X52/L360	12.7	1000	510	250	NG4/B
18"	450	457.2	X52/L360	14.3	1000	560	260	NG4/B
20"	500	508	X52/L360	15.9	1200	640	280	NG4/B
22"	550	558.8	X52/L360	17.5	1200	690	300	NG4/B
24"	600	609.6	X52/L360	19	1200	760	330	NG4/B
26"	650	660.4	X52/L360	19	1200	800	360	NG4/B
28"	700	711.2	X52/L360	19	1300	850	375	NG4/B
30"	750	762	X52/L360	19	1300	900	380	NG4/B
In.	mm	Dimensioni in mm / Dimensions in m						

Tipo: vedi pubblicazione NG-IJTY-01.
Le dimensioni di ingombro, le foto e le figure sono a solo titolo indicativo.

Type: please refer to Nuovagiungas publication NG-IJTY-01.
Overall dimensions, drawings and images for illustrative purpose only.

Materiale: Acciaio API 5L / ISO 3183 / EN10208-2
Estremità a saldare: API 5L / ISO 3183 / EN10208-2
(smusso =30° +5/-0° ; spalla =1.6mm)
Norme e codici: NACE RP0286-86,
D.P.R. 23/03/1998 N° 126 - 94/9/CE - Atex - II 2 GD Zona 1 e 21 d T6
A richiesta: 97/23/CE - PED

Materials: Steel API 5L / ISO 3183 / EN10208-2
Weld ends: API 5L / ISO 3183 / EN10208-2
(bevel= 30° +5/-0° root= 1.6mm +/-0.8mm)
Rules and norms: NACE SP0286,
D.P.R. 23/03/1998 N° 126 - 94/9/CE - Atex - II 2 GD Zona 1 e 21 d T6
On request: 97/23/CE - PED

Scheda tecnica / Technical data sheet : NG025-02/C rev.2 issued 18/06/09 pag. 1/1

NUOVAGIUNGAS
Nuovagiungas srl
41043 FORMIGINE (MO) Italy via A. Moro 26/28
Tel.059-578611-Fax 059-570633-E-mail ng@nuovagiungas.com
Stab. 1/PRODUZIONE E MAGAZZINO:via C.Prampolini 30 - 41043 Formigine MO Italy
Stab.2/SEDE LEGALE E PRODUZIONE:via A.Moro 26,28 - 41043 Formigine MO Italy



II 2 GD Zona 1 e 21 d T6
Tech. file N° AX001 (Notified body N°1370)



ISO 9001:2000
Quality Management System Approved
Certificate No.: LRC 160036

GIUNTI ISOLANTI MONOLITICI
MONOLITHIC INSULATING JOINTS

ACQUA-LINEA
WATER MAIN PIPELINE
PN25

Giunti isolanti di linea
(ACQUA)

Main pipeline insulating joints
(WATER)

Classe: PN25 / MOP25

Class: PN25 / MOP25

Applicazioni principali:
Trasporto e distribuzione di Acqua
potabile, reti ed impianti di
distribuzione acqua potabile.

Main applications:
Potable water supply system,
Potable water distribution
network and service pipe.



T	R	RT	RP	Rh	P	Dove: T=Max temperatura di esercizio R=Resistenza di isolamento in aria a 1000 Volt c.c. RT=Tensione elettrica di prova c.a. RP=Tensione elettrica di perforazione c.a. Rh=Resistenza elettrica giunto pieno di acqua P=pressione nominale	Where: T=Max operating temperature R=Electric resistance in air at 1000 Volt d.c. RT=Dielectric test a.c. RP=Dielectric strength c.a. Rh=electrical resistance full of water P=Nominal pressure
70°C	>5 Mohm	3 KV	>5 KV	Vedi sotto See below	25 Bar 2.5 MPa		
U.R.=55% t=22°C (prove di officina/ factory tests)							

	$Rh = \rho \frac{Li}{A} \text{ (}\Omega\text{)}$		ND	DN	De	Materiale tubo Pipe pups mat.	S	L	Db	B	Tipo Type	!
	Dove: ρ = resistività acqua (Ω cm) Li= lunghezza dell'isolamento longitudinale interno/ rivestimento (cm) A=sezione interna tubo (cm ²) Where: ρ =water resistivity Li= length of longitudinal electrical insulation/lining (cm) A=Internal section of the pipe (cm ²)		2"	50	60.3	Gr.B/L245	3.9	350	88	60	NG5/C	(*)
Certificati rilasciati Released certificates ✓ EN10204 3.1 ✓ EN-UNI-CEI 17050-1 ✓ CE conformity		2 1/2"	65	76.1	L245	4.8	350	113	65	NG5/C	(*)	
		3"	80	88.9	Gr.B/L245	4.8	400	125	65	NG5/C	-	
		4"	100	114.3	Gr.B/L245	4.8	400	150	75	NG5/C	-	
		5"	125	141.3	Gr.B/L245	4.8	500	191	92	NG5/C	-	
		6"	150	168.3	Gr.B/L245	5.6	500	215	97	NG5/C	-	
		8"	200	219.1	Gr.B/L245	6.4	500	273	106	NG5/C	-	
		10"	250	273	Gr.B/L245	6.4	700	323	116	NG5/C	-	
		12"	300	323.8	Gr.B/L245	6.4	700	382	154	NG5/C	-	
		14"	350	355.6	Gr.B/L245	7.1	900	426	180	NG5/B3	-	
		16"	400	406.4	Gr.B/L245	7.1	900	470	175	NG5/B3	-	
		18"	450	457.2	Gr.B/L245	7.1	900	518	200	NG5/B	-	
		20"	500	508	Gr.B/L245	7.1	1000	605	220	NG4/B	-	
		22"	550	558.8	Gr.B/L245	8	1000	660	234	NG4/B	-	
		24"	600	609.6	Gr.B/L245	8.8	1000	726	255	NG4/B	-	
		26"	650	660.4	Gr.B/L245	8.8	1000	766	255	NG4/B	(*)	
		28"	700	711.2	Gr.B/L245	8.8	1200	830	280	NG4/B	(*)	
		30"	750	762	Gr.B/L245	8.8	1200	870	280	NG4/B	(*)	
		36"	900	914.4	S355	10	1200	980	280	NG4/A	(*)	
		40"	1000	1016	S355	12	1200	1140	320	NG4/A	(*)	
		48"	1200	1219.2	S355	12	1400	1350	350	NG4/A	(*)	
		56"	1400	1422.4	S355	15	1600	1565	370	NG4/A	(*)	
		64"	1600	1625.6	S355	16	2000	1760	400	NG4/A	(*)	
		In.	mm	Dimensioni in mm / Dimensions in mm								

(*): Diametro non previsto nella UNI 10285.
Tipo: vedi pubblicazione NG-IJTY-01.
Le dimensioni di ingombro, le foto e le figure sono a solo titolo indicativo.

(*) Item not provided in UNI 10285.
Type: please refer to Nuovagiungas publication NG-IJTY-01.
Overall dimensions, drawings and images for illustrative purpose only.

Materiale: Acciaio API 5L / ISO 3183 / EN10208-1 o 2/ EN10025-S355
Estremità a saldare: API 5L / ISO 3183 / EN10208-2
(smusso =30° +5/-0° ; spalla =1.6mm)
Norme e codici: UNI 10285, NACE SPO286-86,
D.M. 34 - 21/03/1973, D.M. n.174 - 06/04/2004
D.P.R. 23/03/1998 N° 126 - 94/9/CE - Atex - II 2 GD Zona 1 e 21 d T6
A richiesta: 97/23/CE – PED

Materials: Steel API 5L / ISO 3183 / EN10208-1 or 2/ EN 10025-S355
Weld ends: API 5L / ISO 3183 / EN10208-2
(bevel= 30° +5/-0° root= 1.6mm +/-0.8mm)
Rules and norms: UNI 10285, NACE SP0286,
D.M. 34 DEL 21/03/1973, D.M. n.174 del 06/04/2004
D.P.R. 23/03/1998 N° 126 - 94/9/CE - Atex - II 2 GD Zona 1 e 21 d T6
On request: 97/23/CE – PED

Scheda tecnica / Technical data sheet : NG025-03/C rev.3 issued 02/07/10 pag. 1/1



Nuovagiungas srl
41043 FORMIGINE (MO) Italy via A. Moro 26/28
Tel.059-578611-Fax 059-570633-E-mail ng@nuovagiungas.com
Stab. 1/PRODUZIONE E MAGAZZINO:via C.Prampolini 30 - 41043 Formigine MO Italy
Stab.2/SEDE LEGALE E PRODUZIONE:via A.Moro 26,28 - 41043 Formigine MO Italy



II 2 GD Zona 1 e 21 d T6
Tech. file N° AX001 (Notified body N°1370)



ISO 9001:2000
Quality management System Approved
Certificate No.: LRC 160036

GIUNTI ISOLANTI MONOLITICI
MONOLITHIC INSULATING JOINTS

LINEA
MAIN PIPELINE

PN64

Giunti isolanti di linea
PN64

Main pipeline insulating joints
PN64

Classe: PN64 / MOP64

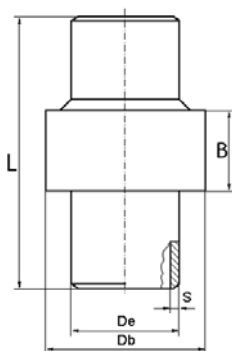
Class: PN64 / MOP64

Applicazioni principali:
Trasporto e distribuzione di GAS
(UNI EN 1594), reti di distribuzione
gas, acqua ed altri fluidi, impianti.

Main applications:
Gas supply system (UNI EN
1594), gas, water or other media
distribution network, plant.



T	R	RT	RP	P	Dove: T=Max temperatura di esercizio R=Resistenza di isolamento in aria a 1000 Volt c.c. RT=Tensione elettrica di prova c.a. RP=Tensione elettrica di perforazione c.a. P=pressione nominale	Where: T=Max operating temperature R=Electric resistance in air at 1000 Volt d.c. RT=Dielectric test a.c. RP=Dielectric strength c.a. P=Nominal pressure
70°C	>100 Mohm	3.5 KV	>10 KV	64 Bar 6,4 MPa		
	U.R.=55% t=22°C (prove di officina/ factory tests)					



Certificati rilasciati
Released certificates

- ✓ EN10204 3.1
- ✓ EN-UNI-CEI 17050-1
- ✓ CE conformity

ND	DN	De	Materiale tubo Pipe pups mat.	S	L	Db	B	Tipo Type
½"	15	21.3	Gr.B/L245	3.2	250	60	59	F2(F1)
¾"	20	26.7	Gr.B/L245	3.2	250	65	60	F2(F1)
1"	25	33.4	Gr.B/L245	3.4	250	75	60	F1(F2)
1¼"	32	42.4	Gr.B/L245	3.6	300	83	68	F2(F1)
1½"	40	48.3	Gr.B/L245	3.7	300	95	86	F1(F2)
2"	50	60.3	Gr.B/L245	3.9	350	114	104	NG5/C
2½"	65	76.1	L245	5.5	350	132	117	NG5/C
3"	80	88.9	Gr.B/L245	5.5	500	155	123	NG5/C
4"	100	114.3	Gr.B/L245	6	500	190	128	NG5/C
5"	125	141.3	Gr.B/L245	6.5	600	217	148	NG5/C
6"	150	168.3	X52/L360	7.1	600	248	161	NG5/C
8"	200	219.1	X52/L360	8.2	600	297	183	NG5/C
10"	250	273	X52/L360	9.3	800	364	202	NG5/C
12"	300	323.8	X52/L360	9.5	800	430	223	NG5/C
14"	350	355.6	X52/L360	12.7	1000	450	210	NG4/B
16"	400	406.4	X52/L360	12.7	1000	510	250	NG4/B
18"	450	457.2	X52/L360	14.3	1000	560	260	NG4/B
20"	500	508	X52/L360	15.9	1200	640	280	NG4/B
22"	550	558.8	X52/L360	17.5	1200	690	300	NG4/B
24"	600	609.6	X52/L360	19	1200	760	330	NG4/B
26"	650	660.4	X52/L360	19	1200	800	360	NG4/B
28"	700	711.2	X52/L360	19	1300	850	375	NG4/B
30"	750	762	X52/L360	19	1300	900	380	NG4/B
In.	mm	Dimensioni in mm / Dimensions in m						

Tipo: vedi pubblicazione NG-IJTY-01.

Le dimensioni di ingombro, le foto e le figure sono a solo titolo indicativo.

Type: please refer to Nuovagiungas publication NG-IJTY-01.

Overall dimensions, drawings and images for illustrative purpose only.

Materiale: Acciaio API 5L / ISO 3183 / EN10208-2
Estremità a saldare: API 5L / ISO 3183 / EN10208-2
(smusso =30° +5/-0° ; spalla =1.6mm)

Norme e codici: NACE RP0286-86, D.M. 24/11/1984, D.M. 16/04/2008,
D.P.R. 23/03/1998 N° 126 - 94/9/CE - Atex - II 2 GD Zona 1 e 21 d T6
A richiesta: 97/23/CE - PED

Materials: Steel API 5L / ISO 3183 / EN10208-2
Weld ends: API 5L / ISO 3183 / EN10208-2
(bevel= 30° +5/-0° root= 1.6mm +/-0.8mm)

Rules and norms: NACE SP0286, D.M. 24/11/1984, D.M. 16/04/2008,
D.P.R. 23/03/1998 N° 126 - 94/9/CE - Atex - II 2 GD Zona 1 e 21 d T6
On request: 97/23/CE - PED

Scheda tecnica / Technical data sheet : NG064-01/C rev.2 issued 18/06/09 pag. 1/1



Nuovagiungas srl
41043 FORMIGINE (MO) Italy via A. Moro 26/28
Tel.059-578611-Fax 059-570633-E-mail ng@nuovagiungas.com
Stab. 1/PRODUZIONE E MAGAZZINO:via C.Prampolini 30 - 41043 Formigine MO Italy
Stab.2/SEDE LEGALE E PRODUZIONE:via A.Moro 26,28 - 41043 Formigine MO Italy



II 2 GD Zona 1 e 21 d T6
Tech. file N° AX001 (Notified body N°1370)



ISO 9001:2000
Quality management System Approved
Certificate No.: LRC 160036

GIUNTI ISOLANTI MONOLITICI
MONOLITHIC INSULATING JOINTS

LINEA
MAIN PIPELINE
PN100

Giunti isolanti di linea
PN100

Main pipeline insulating joints
PN100

Classe: PN100 / MOP100

Class: PN100 / MOP100

Applicazioni principali:
Trasporto e distribuzione di GAS,
reti di distribuzione gas, acqua ed
altri fluidi^(*), impianti.

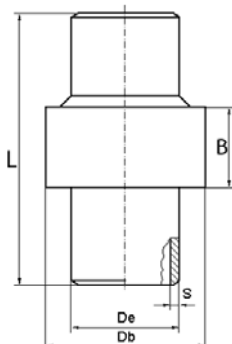
(*) La lista dei fluidi compatibili disponibile a
richiesta

Main applications:
Gas supply system, gas, water or
other fluid^(*) distribution network,
plant.

(*) Allowed fluid available upon request



T	R	RT	RP	P	Dove: T=Max temperatura di esercizio R=Resistenza di isolamento in aria a 1000 Volt c.c. RT=Tensione elettrica di prova c.a. RP=Tensione elettrica di perforazione c.a. P=pressione nominale	Where: T=Max operating temperature R=Electric resistance in air at 1000 Volt d.c. RT=Dielectric test a.c. RP=Dielectric strength c.a. P=Nominal pressure
70°C	>100 Mohm	3.5 KV	>10 KV	100 Bar 10,0 MPa		
U.R.=55% t=22°C (prove di officina/ factory tests)						



Certificati rilasciati
Released certificates

- ✓ EN10204 3.1
- ✓ EN-UNI-CEI 17050-1
- ✓ CE conformity

ND	DN	De	Materiale tubo Pipe pups mat.	S	L	Db	B	Tipo Type
1/2"	15	21.3	Gr.B/L245	3.2	250	60	59	F2(F1)
3/4"	20	26.7	Gr.B/L245	3.2	250	65	60	F2(F1)
1"	25	33.4	Gr.B/L245	3.4	250	75	60	F1(F2)
1 1/4"	32	42.4	Gr.B/L245	3.6	300	83	68	F2(F1)
1 1/2"	40	48.3	Gr.B/L245	3.7	300	95	86	F1(F2)
2"	50	60.3	Gr.B/L245	3.9	350	114	104	NG5/C
2 1/2"	65	76.1	L245	5.5	350	132	117	NG5/C
3"	80	88.9	Gr.B/L245	5.5	500	155	123	NG5/C
4"	100	114.3	Gr.B/L245	6	500	190	128	NG5/C
5"	125	141.3	Gr.B/L245	6.5	600	217	148	NG5/C
6"	150	168.3	X52/L360	7.1	600	248	161	NG5/C
8"	200	219.1	X52/L360	8.2	600	297	183	NG5/C
10"	250	273	X52/L360	9.3	800	364	202	NG5/C
12"	300	323.8	X52/L360	9.5	800	430	223	NG5/C
14"	350	355.6	X52/L360	12.7	1000	455	231	NG4/B
16"	400	406.4	X52/L360	12.7	1000	540	280	NG4/B
18"	450	457.2	X52/L360	14.3	1000	600	290	NG4/B
20"	500	508	X52/L360	15.9	1200	684	308	NG4/B
22"	550	558.8	X52/L360	17.5	1200	730	340	NG4/B
24"	600	609.6	X52/L360	19	1200	810	360	NG4/B
26"	650	660.4	X52/L360	19	1200	845	390	NG4/B
28"	700	711.2	X52/L360	19	1300	890	400	NG4/B
30"	750	762	X52/L360	19	1300	970	421	NG4/B
In.	mm	Dimensioni in mm / Dimensions in m						

Tipo: vedi pubblicazione NG-IJTY-01.

Le dimensioni di ingombro, le foto e le figure sono a solo titolo indicativo.

Type: please refer to Nuovagiungas publication NG-IJTY-01.

Overall dimensions, drawings and images for illustrative purpose only.

Materiale: Acciaio API 5L / ISO 3183 / EN10208-2
Estremità a saldare: API 5L / ISO 3183 / EN10208-2
(smusso =30° +5/-0° ; spalla =1.6mm)

Norme e codici: NACE RP0286-86, D.M. 24/11/1984, D.M. 16/04/2008,
D.P.R. 23/03/1998 N° 126 - 94/9/CE - Atex - II 2 GD Zona 1 e 21 d T6
A richiesta: 97/23/CE - PED

Materials: Steel API 5L / ISO 3183 / EN10208-2

Weld ends: API 5L / ISO 3183 / EN10208-2
(bevel= 30° +5/-0° root= 1.6mm +/-0.8mm)

Rules and norms: NACE SP0286, D.M. 24/11/1984, D.M. 16/04/2008,
D.P.R. 23/03/1998 N° 126 - 94/9/CE - Atex - II 2 GD Zona 1 e 21 d T6
On request: 97/23/CE - PED

Scheda tecnica / Technical data sheet : NG100-01/C rev.2 issued 18/06/09 pag. 1/1



Nuovagiungas srl
41043 FORMIGINE (MO) Italy via A. Moro 26/28
Tel.059-578611-Fax 059-570633-E-mail ng@nuovagiungas.com
Stab. 1/PRODUZIONE E MAGAZZINO:via C.Prampolini 30 - 41043 Formigine MO Italy
Stab.2/SEDE LEGALE E PRODUZIONE:via A.Moro 26,28 - 41043 Formigine MO Italy



II 2 GD Zona 1 e 21 d T6
Tech. file N° AX001 (Notified body N°1370)



ISO 9001:2000
Quality management System Approved
Certificate No.: LRC 160036

GIUNTI ISOLANTI MONOLITICI
MONOLITHIC INSULATING JOINTS

LINEA
MAIN PIPELINE
PN100-UNI11105

Giunti isolanti di linea
UNI 11105

Main pipeline insulating joints
UNI 11105

Classe: PN100 / MOP100

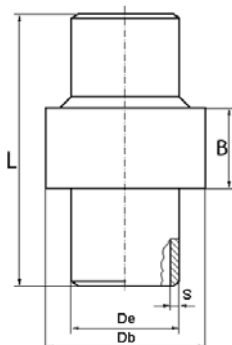
Class: PN100 / MOP100

Applicazioni principali:
Trasporto e distribuzione di GAS
(UNI EN 1594), reti di distribuzione
gas

Main applications:
Gas supply system (UNI EN
1594), gas distribution network



T	R	RT	RP	P	Dove: T=Max temperatura di esercizio R=Resistenza di isolamento in aria a 1000 Volt c.c. RT=Tensione elettrica di prova c.a. RP=Tensione elettrica di perforazione c.a. P=pressione nominale	Where: T=Max operating temperature R=Electric resistance in air at 1000 Volt d.c. RT=Dielectric test a.c. RP=Dielectric strength c.a. P=Nominal pressure
70°C	>100 Mohm	3.5 KV	>10 KV	100 Bar 10,0 MPa		
U.R.=55% t=22°C (prove di officina/ factory tests)						



Certificati rilasciati
Released certificates

- ✓ EN10204 3.1
- ✓ EN-UNI-CEI 17050-1
- ✓ CE conformity

ND	DN	De	Materiale tubo Pipe pups mat.	S	L	Db	B	Tipo Type
½"	15	21.3	Gr.B/L245	3.2	250	60	59	F2
¾"	20	26.7	Gr.B/L245	3.2	250	65	60	F2
1"	25	33.4	Gr.B/L245	3.4	250	75	60	F1
1¼"	32	42.4	Gr.B/L245	3.6	300	83	68	F2
1½"	40	48.3	Gr.B/L245	3.7	300	95	86	F1
2"	50	60.3	Gr.B/L245	3.9	350	114	104	NG5/C
2½"	65	76.1	L245	5.5	350	132	117	NG5/C
3"	80	88.9	Gr.B/L245	5.5	500	155	123	NG5/C
4"	100	114.3	Gr.B/L245	6	500	190	128	NG5/C
5"	125	141.3	Gr.B/L245	6.5	600	217	148	NG5/C
6"	150	168.3	X52/L360	7.1	600	248	161	NG5/C
8"	200	219.1	X52/L360	8.2	600	297	183	NG5/C
10"	250	273	X52/L360	9.3	800	364	202	NG5/C
12"	300	323.8	X52/L360	9.5	800	430	223	NG5/C
14"	350	355.6	X52/L360	12.7	1000	455	231	NG4/B
16"	400	406.4	X52/L360	12.7	1000	540	280	NG4/B
18"	450	457.2	X52/L360	14.3	1000	600	290	NG4/B
20"	500	508	X52/L360	15.9	1200	684	308	NG4/B
22"	550	558.8	X52/L360	17.5	1200	730	340	NG4/B
24"	600	609.6	X52/L360	19	1200	810	360	NG4/B
26"	650	660.4	X52/L360	19	1200	845	390	NG4/B
28"	700	711.2	X52/L360	19	1300	890	400	NG4/B
30"	750	762	X52/L360	19	1300	970	421	NG4/B
In.	mm	Dimensioni in mm / Dimensions in m						

Tipo: vedi pubblicazione NG-IJTY-01.
Le dimensioni di ingombro, le foto e le figure sono a solo titolo indicativo.

Type: please refer to Nuovagiungas publication NG-IJTY-01.
Overall dimensions, drawings and images for illustrative purpose only.

Materiale: Acciaio API 5L / ISO 3183 / EN10208-2
Estremità a saldare: API 5L / ISO 3183 / EN10208-2
(smusso =30° +5/-0° ; spalla =1.6mm)
Norme e codici: UNI11105, NACE RP0286-86, D.M. 24/11/1984,
D.M. 16/04/2008,
D.P.R. 23/03/1998 N° 126 - 94/9/CE - Atex - II 2 GD Zona 1 e 21 d T6
A richiesta: 97/23/CE - PED

Materials: Steel API 5L / ISO 3183 / EN10208-2
Weld ends: API 5L / ISO 3183 / EN10208-2
(bevel= 30° +5/-0° root= 1.6mm +/-0.8mm)
Rules and norms: UNI11105, NACE SP0286, D.M. 24/11/1984,
D.M. 16/04/2008,
D.P.R. 23/03/1998 N° 126 - 94/9/CE - Atex - II 2 GD Zona 1 e 21 d T6
On request: 97/23/CE - PED

Scheda tecnica / Technical data sheet : NG100-02/C rev.1 issued 18/06/09 pag. 1/1



NUOVAGIUNGAS
Nuovagiungas srl
41043 FORMIGINE (MO) Italy via A. Moro 26/28
Tel.059-578611-Fax 059-570633-E-mail ng@nuovagiungas.com
Stab. 1/PRODUZIONE E MAGAZZINO:via C.Prampolini 30 - 41043 Formigine MO Italy
Stab.2/SEDE LEGALE E PRODUZIONE:via A.Moro 26,28 - 41043 Formigine MO Italy



II 2 GD Zona 1 e 21 d T6
Tech. file N° AX001 (Notified body N°1370)



ISO 9001:2000
Quality management System Approved
Certificate No.: LRC 160036

GIUNTI ISOLANTI MONOLITICI
MONOLITHIC INSULATING JOINTS

LINEA
MAIN PIPELINE
PN100-SNAM

Giunti isolanti di linea
UNI 11105 Snam Rete Gas

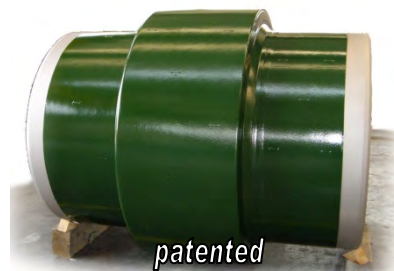
Main pipeline insulating joints
UNI 11105 Snam Rete Gas

Classe: PN100 / MOP100

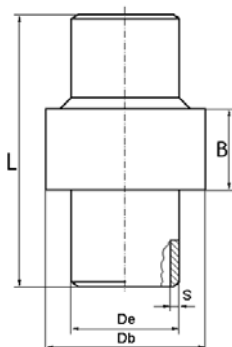
Class: PN100 / MOP100

Applicazioni principali:
Trasporto e distribuzione, reti di
distribuzione SNAM Rete Gas

Main applications:
Gas supply system and gas
distribution network SNAM Rete
Gas



T	R	RT	RP	P	Dove: T=Max temperatura di esercizio R=Resistenza di isolamento in aria a 1000 Volt c.c. RT=Tensione elettrica di prova c.a. RP=Tensione elettrica di perforazione c.a. P=pressione nominale	Where: T=Max operating temperature R=Electric resistance in air at 1000 Volt d.c. RT=Dielectric test a.c. RP=Dielectric strength c.a. P=Nominal pressure
70°C	>100 Mohm	3.5 KV	>10 KV	100 Bar 10,0 MPa		
U.R.=55% t=22°C (prove di officina/ factory tests)						



Certificati rilasciati
Released certificates

- ✓ EN10204 3.1
- ✓ EN-UNI-CEI 17050-1
- ✓ CE conformity

ND	DN	De	Materiale tubo Pipe pups mat.	S	L	Db	B	Tipo Type		
3"	80	88.9	X52/L360	4.0	500	SU RICHIESTA / ON REQUEST	SU RICHIESTA / ON REQUEST	NG5/B		
4"	100	114.3	X52/L360	5.2	500			NG5/B		
6"	150	168.3	X52/L360	7.1	600			NG7/B		
8"	200	219.1	X52/L360	7.0	600			NG7/B		
10"	250	273	X52/L360	7.8	800			NG7/B		
12"	300	323.8	X52/L360	9.5	1000			NG7/B		
14"	350	355.6	X52/L360	10.3	1000			NG7/B		
16"	400	406.4	X52/L360	11.1	1000			NG7/B		
18"	450	457.2	X60/L415	11.1	1000			NG4/B		
20"	500	508	X60/L415	12.7	1200			NG4/B		
22"	550	558.8	X60/L415	14.3	1200			NG4/B		
24"	600	609.6	X60/L415	14.3	1200			NG4/B		
26"	650	660.4	X60/L415	15.9	1200			NG4/B		
30"	750	762	X60/L415	17.5	1300			NG4/B		
32"	800	812.8	X65/L450	17.5	1400			NG4/B		
34"	850	863.6	X65/L450	19.1	1300			NG4/B		
36"	900	927.2	X65/L450	19.6	1400			NG4/B		
40"	1000	1016	X65/L450	20.62	1600			NG4/B		
42"	1050	1084	X65/L450	22.8	1600			NG4/B		
48"	1200	1236	X65/L450	25.9	1800			NG4/B		
56"	1400	1438	X65/L450	29.8	2015			NG4/B		
-	-	-	-	-	-			-	-	-
-	-	-	-	-	-			-	-	-
In.	mm	Dimensioni in mm / Dimensions in m								

Tipo: vedi pubblicazione NG-IJTY-01.

Le dimensioni di ingombro, le foto e le figure sono a solo titolo indicativo.

Type: please refer to Nuovagiungas' publication NG-IJTY-01.

Overall dimensions, drawings and images for illustrative purpose only.

Materiale: Acciaio API 5L / ISO 3183 / EN10208-2

Estremità a saldare: Cianfrinate come da spec. C.02.12.00

Norme e codici: UNI11105, NACE RP0286-86, D.M. 24/11/1984, D.M. 16/04/2008, Spec. C.02.12.00.

D.P.R. 23/03/1998 N° 126 - 94/9/CE - Atex - II 2 GD Zona 1 e 21 d T6

A richiesta: 97/23/CE - PED

Materials: Steel API 5L / ISO 3183 / EN10208-2

Weld ends: bevel as per spec. C.02.12.00

Rules and norms: UNI11105, NACE SP0286, D.M. 24/11/1984, D.M. 16/04/2008, Spec. C.02.12.00.

D.P.R. 23/03/1998 N° 126 - 94/9/CE - Atex - II 2 GD Zona 1 e 21 d T6

On request: 97/23/CE - PED

Scheda tecnica / Technical data sheet : NG100-03/C rev.1 issued 18/06/09 pag. 1/1



NUOVAGIUNGAS

Nuovagiungas srl
41043 FORMIGINE (MO) Italy via A. Moro 26/28
Tel.059-578611-Fax 059-570633-E-mail ng@nuovagiungas.com
Stab. 1/PRODUZIONE E MAGAZZINO:via C.Prampolini 30 - 41043 Formigine MO Italy
Stab.2/SEDE LEGALE E PRODUZIONE:via A.Moro 26,28 - 41043 Formigine MO Italy



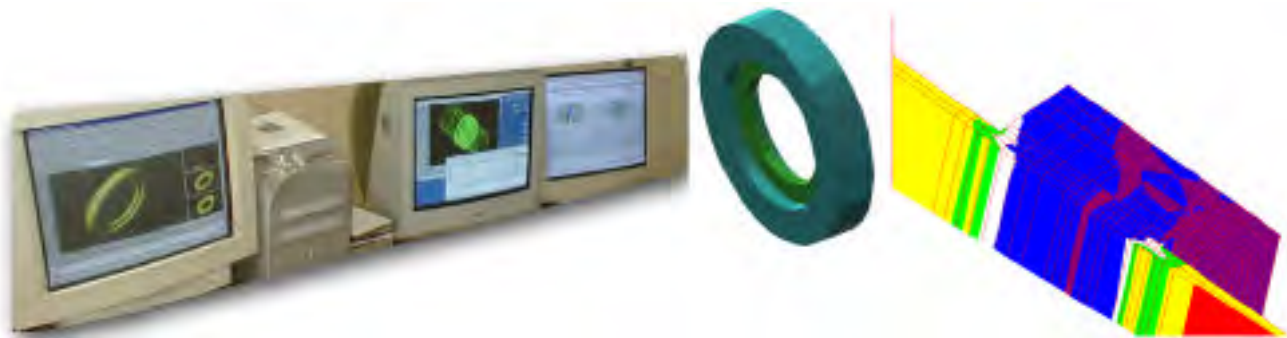
II 2 GD Zona 1 e 21 d T6
Tech. file N° AX001 (Notified body N°1370)



ISO 9001:2000
Quality management System Approved
Certificate No.: LRC 160036

GIUNTI ISOLANTI MONOLITICI MONOLITHIC INSULATING JOINTS

SPECIALI
SPECIAL



SPECIAL INSULATING JOINTS

- Designed, manufactured and tested **in compliance with purchaser specifications**
- Sizes **from 1/2" to 130"**
- Operating pressure up to **1000 Bar**
- Electrical resistance in air at 1000 V dc **200 Mohm**
- Dielectric strength test (ac 50 Hz) **up to 40KV**
- Operating temperature **up to 250°C**
- Available with materials matching pipelines in carbon steel (up to grade **API5L-X100**), austenitic stainless steel, duplex stainless steel, with inconel or incolloy internal cladding, etc.
- For gas, oil, water, sour service and other special ones.
- Available with weld ends, flanged ends, thread ends, connection lugs.
- **Monolithic construction**
- **Symmetric U shape Double Sealing Gasket System**
- **Boltless and "O"-Ring free**

GIUNTI ISOLANTI SPECIALI

- Progettato, costruiti e collaudato **in accordo alle specifiche del cliente**
- Disponibili da **1/2" a 130"**
- Pressioni di esercizio fino a **1000 Bar**
- Resistenza elettrica in aria a 1000V cc **200 Mohm**
- Rigidità dielettrica (ca 50Hz) **fino 40KV**
- Temperatura di esercizio **fino a 250°C**
- Disponibili per tubazioni in acciaio al carbonio at alta resistenza (fino al grado **API5L-X100**), Acciaio inossidabile austenitico, duplex, con claddatura interna in inconel o incolloy , ecc.
- Per gas, petrolio, acqua , servizio acido e fluidi speciali .
- Disponibili con estremità a saldare, flangiata. filettate, e con orecchiette di shuntaggio
- **Costruzione monolitica**
- **Sistema di tenuta simmetrico a U rovesciato**
- **Senza bulloni e tiranti e privo di tenute or-ring**

You are invited to send us yr specifications for helping you choose the best solution to all yr problems.

Vi invitiamo ad inviarci le Vs. specifiche allo scopo di Consigliarvi la soluzione migliore.

Scheda tecnica / *Technical data sheet* NGSPC-01 REV. 0 11-11-2004 pag. 1/2



NUOVAGIUNGAS

Nuovagiungas srl
41043 FORMIGINE (MO) Italy / Tel.059-578611-Fax 059-570633-Email ng@nuovagiungas.com
Stab.1/PRODUZIONE E MAGAZZINO:via C.Prampolini 30 - 41043 Formigine MO Italy
Stab.2/SEDE LEGALE E PRODUZIONE:via A.Moro 26,28 - 41043 Formigine MO Italy



II 2 GD Zona 1 e 21 d T6
Tech. file N° ATEX/ITA/40.2003.1423



ISO 9001:2000
Quality management System Approved
Certificate No.: LRC 160036

GIUNTI ISOLANTI MONOLITICI MONOLITHIC INSULATING JOINTS

SPECIALI
SPECIAL

GIUNTI ISOLANTI SPECIALI SPECIAL INSULATING JOINTS



Monolithic insulating joints for Water pipeline N.D. 128" (3251mm).
Giunto isolante monolitico per acquedotto DN3200 (2351mm)



Monolithic insulating joints, flanged ends
Giunto isolante monolitico con estremità flangiate



Monolithic insulating for API 5LX100-ISO3183-3 L690MC pipeline (ENI T.A.P. project) 48" #900
Giunto isolante monolitico per tubazione in API 5LX100-ISO3183-3 L690MC (ENI T.A.P. project) 48" #900



Monolithic insulating joints for High pressure pipe line (API10000)
Giunto isolante monolitico per tubazioni ad alta pressione (API 10000 - 700 Bar)



Monolithic insulating joints with surge diverter
Giunto isolante monolitico con scaricatore di protezione



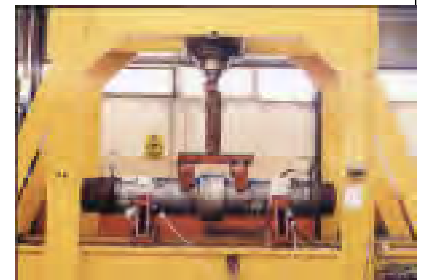
Monolithic insulating joints with isolated spool and special insulating sleeves for sea water
Giunto isolante monolitico con spool isolato e speciali boccole isolate per acqua di mare



Monolithic insulating for pipeline with high torsional stress during torsional resistance test
Giunto isolante monolitico per tubazione con elevato stress a torsione durante la prova di resistenza a torsione



Monolithic insulating for pipeline with high bending stress during combined bending-pressure test
Giunto isolante monolitico per tubazione con elevato stress a flessione durante la prova combinata di presso-flessione



Monolithic insulating for pipeline with high temperature and high bending stress during hydro-thermo-bending test
Giunto isolante monolitico per tubazione con elevata temperatura di esercizio ed elevato stress a flessione durante la prova di resistenza simultanea a temperatura-pressione-flessione

Scheda tecnica / Technical data sheet NGSPC-01 REV. 0 11-11-2004 pag. 2/2



NUOVAGIUNGAS

Nuovagiungas srl
41043 FORMIGINE (MO) Italy / Tel.059-578611-Fax 059-570633-Email ng@nuovagiungas.com
Stab.1/PRODUZIONE E MAGAZZINO:via C.Prampolini 30 - 41043 Formigine MO Italy
Stab.2/SEDE LEGALE E PRODUZIONE:via A.Moro 26,28 - 41043 Formigine MO Italy



II 2 GD Zona 1 e 21 d T6
Tech. file N° ATEX/ITA/40.2003.1423



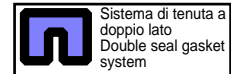
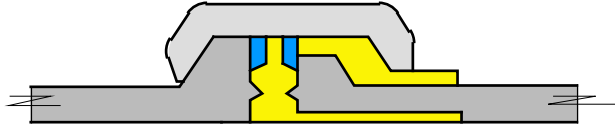
ISO 9001:2000
Quality management System Approved
Certificate No.: LRC 160036

GIUNTI ISOLANTI MONOLITICI MONOLITHIC INSULATING JOINTS

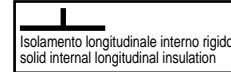
TIPI
TYPE

B_x

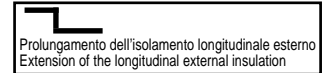
B1:Maschio/Maschio - B2:
Maschio/Saldare - B3: Saldare/
Saldare - B4: Femmina/Saldare -
B5: Maschio/Femmina -B6:
Femmina Femmina - B7 :maschio
con valvola femmina - B8 : saldare
con valvola femmina
B1:Male/Male - B2: Male/Weld -
B3: Weld/Weld - B4: Female/Weld
- B5: Male/Female -B6: Female
Female - B7 :male with female
valve - B8: weld with female valve



Sistema di tenuta a doppio lato
Double seal gasket system



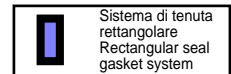
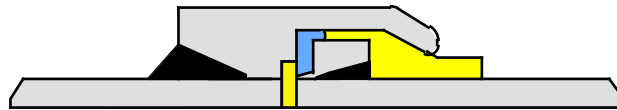
isolamento longitudinale interno rigido
solid internal longitudinal insulation



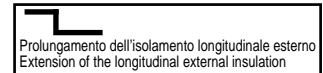
Prolungamento dell'isolamento longitudinale esterno
Extension of the longitudinal external insulation

STD

F1



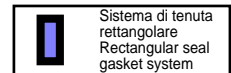
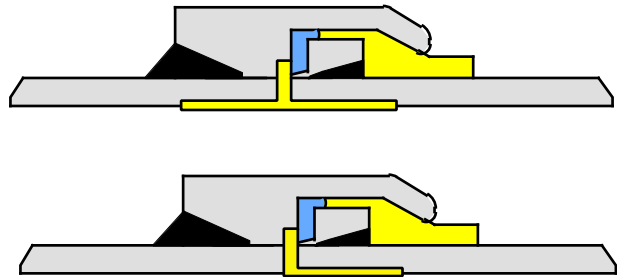
Sistema di tenuta rettangolare
Rectangular seal gasket system



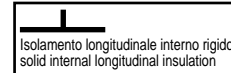
Prolungamento dell'isolamento longitudinale esterno
Extension of the longitudinal external insulation

STD

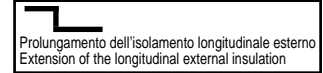
F1/C



Sistema di tenuta rettangolare
Rectangular seal gasket system



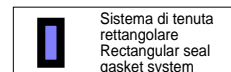
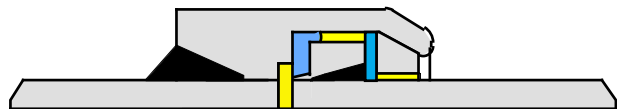
isolamento longitudinale interno rigido
solid internal longitudinal insulation



Prolungamento dell'isolamento longitudinale esterno
Extension of the longitudinal external insulation

STD

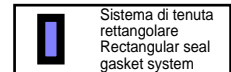
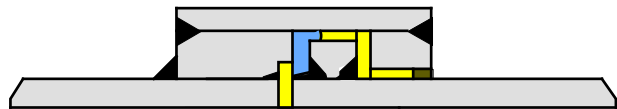
F2



Sistema di tenuta rettangolare
Rectangular seal gasket system

STD

F6



Sistema di tenuta rettangolare
Rectangular seal gasket system

STD

Tutti i tipi di giunti isolanti Nuovagiungas sono monolitici (boltless) e o-ring free
All Nuovagiungas Insulating joints types are monolithic (boltless) and o-ring free

Scheda tecnica / Technical data sheet NG-IJTY-01 REV. 0 11-11-2004 pag. 1/7



NUOVAGIUNGAS

Nuovagiungas srl
41043 FORMIGINE (MO) Italy / Tel.059-558390-Fax 059-570633-Email ng@nuovagiungas.com
Stab.1/PRODUZIONE E MAGAZZINO:via C.Prampolini 30 - 41043 Formigine MO Italy
Stab.2/SEDE LEGALE E PRODUZIONE:via A.Moro 26,28 - 41043 Formigine MO Italy

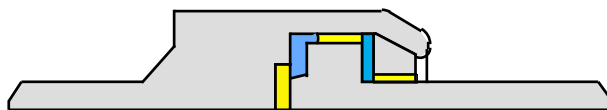



ISO 9001:2000
Quality management System Approved
Certificate No.: LRC 160036

GIUNTI ISOLANTI MONOLITICI MONOLITHIC INSULATING JOINTS

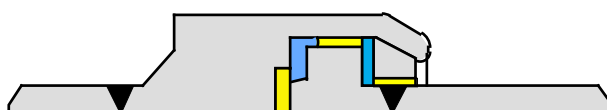
TIPI
TYPE


NB1



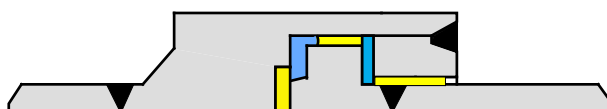
 Sistema di tenuta rettangolare
Rectangular seal gasket system


NB2



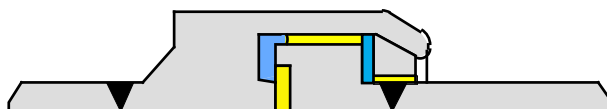
 Sistema di tenuta rettangolare
Rectangular seal gasket system


NB3



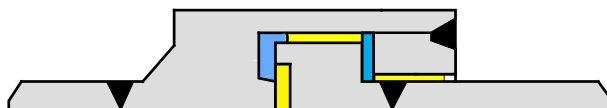
 Sistema di tenuta rettangolare
Rectangular seal gasket system


NB28



 Sistema di tenuta rettangolare
Rectangular seal gasket system

NB38



 Sistema di tenuta rettangolare
Rectangular seal gasket system

Tutti i tipi di giunti isolanti Nuovagiungas sono monolitici (boltless) e o-ring free
All Nuovagiungas Insulating joints types are monolithic (boltless) and o-ring free

Scheda tecnica / Technical data sheet NG-IJTY-01 REV. 0 11-11-2004 pag. 2/7



NUOVAGIUNGAS

Nuovagiungas srl
41043 FORMIGINE (MO) Italy / Tel.059-558390-Fax 059-570633-Email ng@nuovagiungas.com
Stab.1/PRODUZIONE E MAGAZZINO:via C.Prampolini 30 - 41043 Formigine MO Italy
Stab.2/SEDE LEGALE E PRODUZIONE:via A.Moro 26,28 - 41043 Formigine MO Italy

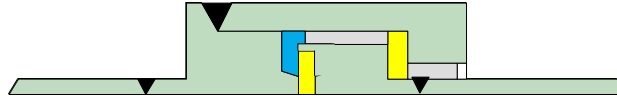



ISO 9001:2000
Quality management System Approved
Certificate No.: LRC 160036

GIUNTI ISOLANTI MONOLITICI MONOLITHIC INSULATING JOINTS

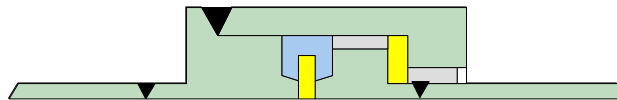
TIPI
TYPE


NG3/A



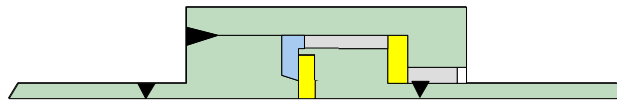
 Sistema di tenuta rettangolare
Rectangular seal gasket system


NG3/B



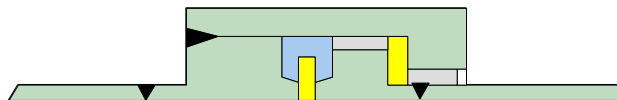
 Sistema di tenuta a doppio lato
Double seal gasket system


NG4/A



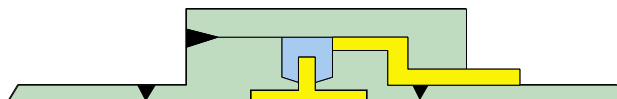
 Sistema di tenuta rettangolare
Rectangular seal gasket system


NG4/B





 Sistema di tenuta a doppio lato
Double seal gasket system

NG4/C



 Sistema di tenuta a doppio lato
Double seal gasket system

 Isolamento longitudinale interno rigido
Solid internal longitudinal insulation

 Prolungamento dell'isolamento longitudinale esterno
Extension of the longitudinal external insulation

STD

Tutti i tipi di giunti isolanti Nuovagiungas sono monolitici (boltless) e o-ring free
All Nuovagiungas Insulating joints types are monolithic (boltless) and o-ring free

Scheda tecnica / Technical data sheet NG-IJTY-01 REV. 0 11-11-2004 pag. 3/7



NUOVAGIUNGAS

Nuovagiungas srl
41043 FORMIGINE (MO) Italy / Tel.059-558390-Fax 059-570633-Email ng@nuovagiungas.com
Stab.1/PRODUZIONE E MAGAZZINO:via C.Prampolini 30 - 41043 Formigine MO Italy
Stab.2/SEDE LEGALE E PRODUZIONE:via A.Moro 26,28 - 41043 Formigine MO Italy

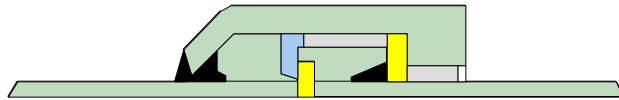



ISO 9001:2000
Quality management System Approved
Certificate No.: LRC 160036

GIUNTI ISOLANTI MONOLITICI MONOLITHIC INSULATING JOINTS

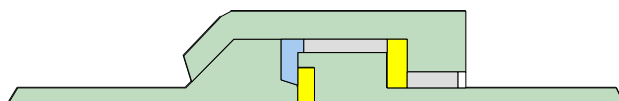
TIPI
TYPE


NG5/A



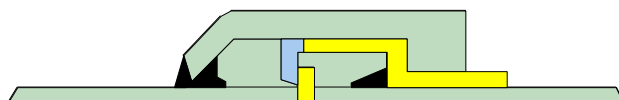
 Sistema di tenuta rettangolare
Rectangular seal gasket system


NG5/A *ss*




 Sistema di tenuta rettangolare
Rectangular seal gasket system

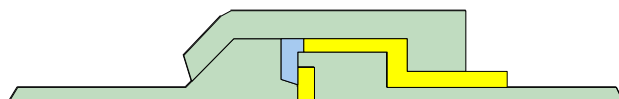
NG5/A2





 Sistema di tenuta rettangolare
Rectangular seal gasket system

 Prolungamento dell'isolamento longitudinale esterno
Extension of the longitudinal external insulation

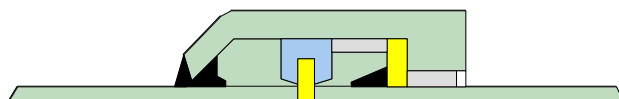
NG5/A2 *ss*




 Sistema di tenuta rettangolare
Rectangular seal gasket system

 Prolungamento dell'isolamento longitudinale esterno
Extension of the longitudinal external insulation

NG5/B



 Sistema di tenuta a doppio lato
Double seal gasket system

STD

Tutti i tipi di giunti isolanti Nuovagiungas sono monolitici (boltless) e o-ring free
All Nuovagiungas Insulating joints types are monolithic (boltless) and o-ring free

Scheda tecnica / Technical data sheet NG-IJTY-01 REV. 0 11-11-2004 pag. 4/7



NUOVAGIUNGAS

Nuovagiungas srl
41043 FORMIGINE (MO) Italy / Tel.059-558390-Fax 059-570633-Email ng@nuovagiungas.com
Stab.1/PRODUZIONE E MAGAZZINO:via C.Prampolini 30 - 41043 Formigine MO Italy
Stab.2/SEDE LEGALE E PRODUZIONE:via A.Moro 26,28 - 41043 Formigine MO Italy

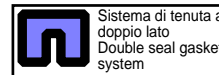
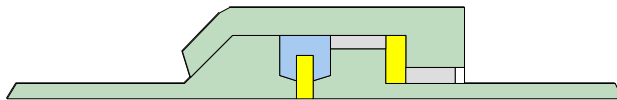


ISO 9001:2000
Quality management System Approved
Certificate No.: LRC 160036

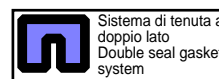
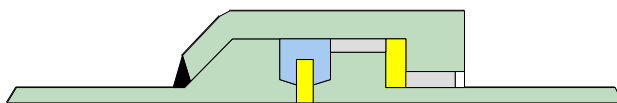
GIUNTI ISOLANTI MONOLITICI MONOLITHIC INSULATING JOINTS

TIPI
TYPE

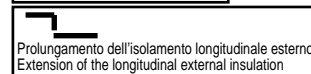
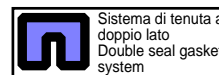
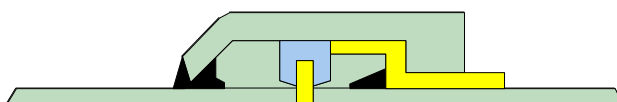
NG5/B ss



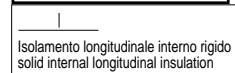
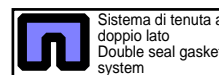
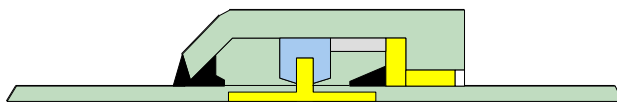
NG5/B ss2



NG5/B2

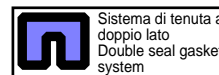
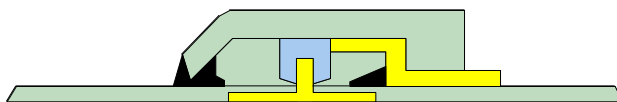


NG5/B3



STD

NG5/C



STD

Tutti i tipi di giunti isolanti Nuovagiungas sono monolitici (boltless) e o-ring free
All Nuovagiungas Insulating joints types are monolithic (boltless) and o-ring free

Scheda tecnica / Technical data sheet NG-IJTY-01 REV. 0 11-11-2004 pag. 5/7



NUOVAGIUNGAS

Nuovagiungas srl
41043 FORMIGINE (MO) Italy / Tel.059-558390-Fax 059-570633-Email ng@nuovagiungas.com
Stab.1/PRODUZIONE E MAGAZZINO:via C.Prampolini 30 - 41043 Formigine MO Italy
Stab.2/SEDE LEGALE E PRODUZIONE:via A.Moro 26,28 - 41043 Formigine MO Italy

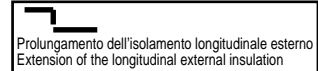
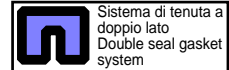
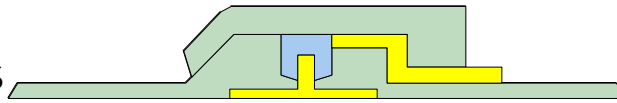


ISO 9001:2000
Quality management System Approved
Certificate No.: LRC 160036

GIUNTI ISOLANTI MONOLITICI MONOLITHIC INSULATING JOINTS

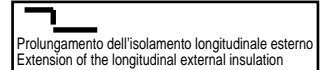
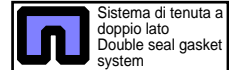
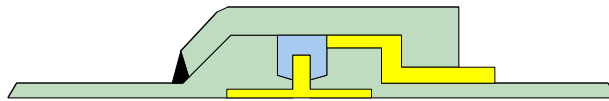
TIPI
TYPE

NG5/C ss

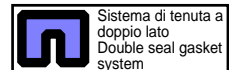
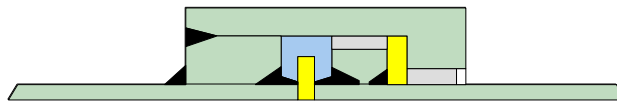


STD

NG5/C ss2

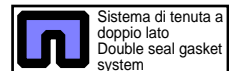
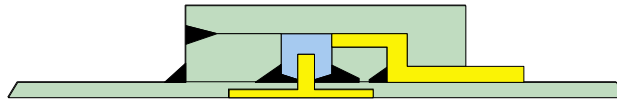


NG7/B



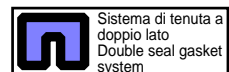
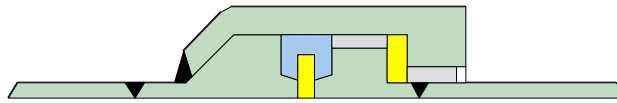
STD

NG7/C

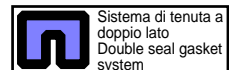
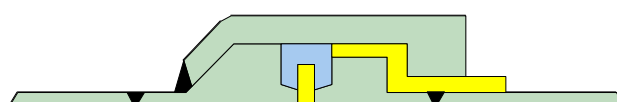


STD

NG8/B



NG8/B2



Tutti i tipi di giunti isolanti Nuovagiungas sono monolitici (boltless) e o-ring free
All Nuovagiungas Insulating joints types are monolithic (boltless) and o-ring free

Scheda tecnica / Technical data sheet NG-IJTY-01 REV. 0 11-11-2004 pag. 6/7



NUOVAGIUNGAS

Nuovagiungas srl
41043 FORMIGINE (MO) Italy / Tel.059-558390-Fax 059-570633-Email ng@nuovagiungas.com
Stab.1/PRODUZIONE E MAGAZZINO:via C.Prampolini 30 - 41043 Formigine MO Italy
Stab.2/SEDE LEGALE E PRODUZIONE:via A.Moro 26,28 - 41043 Formigine MO Italy

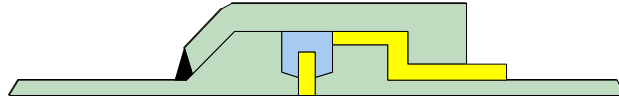


ISO 9001:2000
Quality management System Approved
Certificate No.: LRC 160036

GIUNTI ISOLANTI MONOLITICI MONOLITHIC INSULATING JOINTS

TIPI
TYPE

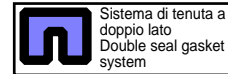
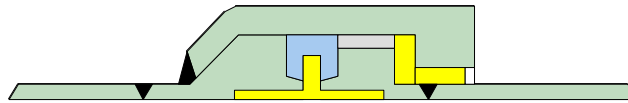
NG8/B2 *ss*



Sistema di tenuta a doppio lato
Double seal gasket system

Prolungamento dell'isolamento longitudinale esterno
Extension of the longitudinal external insulation

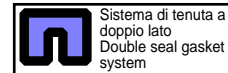
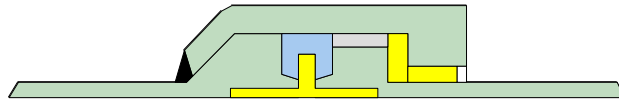
NG8/B3



Sistema di tenuta a doppio lato
Double seal gasket system

Isolamento longitudinale interno rigido
solid internal longitudinal insulation

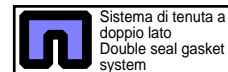
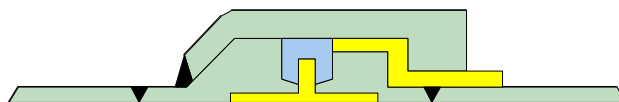
NG8/B3 *ss*



Sistema di tenuta a doppio lato
Double seal gasket system

Isolamento longitudinale interno rigido
solid internal longitudinal insulation

NG8/C

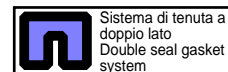
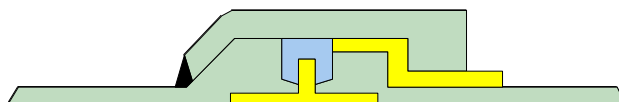


Sistema di tenuta a doppio lato
Double seal gasket system

Isolamento longitudinale interno rigido
solid internal longitudinal insulation

Prolungamento dell'isolamento longitudinale esterno
Extension of the longitudinal external insulation

NG8/C *ss*



Sistema di tenuta a doppio lato
Double seal gasket system

Isolamento longitudinale interno rigido
solid internal longitudinal insulation

Prolungamento dell'isolamento longitudinale esterno
Extension of the longitudinal external insulation

Tutti i tipi di giunti isolanti Nuovagiungas sono monolitici (boltless) e o-ring free
All Nuovagiungas Insulating joints types are monolithic (boltless) and o-ring free

Scheda tecnica / Technical data sheet NG-IJTY-01 REV. 0 11-11-2004 pag. 77



NUOVAGIUNGAS

Nuovagiungas srl
41043 FORMIGINE (MO) Italy / Tel.059-558390-Fax 059-570633-Email ng@nuovagiungas.com
Stab.1/PRODUZIONE E MAGAZZINO:via C.Prampolini 30 - 41043 Formigine MO Italy
Stab.2/SEDE LEGALE E PRODUZIONE:via A.Moro 26,28 - 41043 Formigine MO Italy



ISO 9001:2000
Quality management System Approved
Certificate No.: LRC 160036

POLYETHYLENE (PE) - STEEL (ACC) TRANSITION FITTINGS

RACCORDI DI TRANSIZIONE POLIETILENE (PE) - ACCIAIO (ACC)

mod. NGPE1

In accordance with the Italian Ministerial Decree dtd. 24-11-84 and with the norm UNI 9736

Conformi al D.M. 24-11-84 ed alla norma UNI 9736

TYPE TIPO	ND Steel side DN lato ACC	PE SIDE MATERIAL UNI-ISO 4437 class A LATO PE MATERIALE UNI-ISO 4437 classe A				ACC SIDE MATERIAL UNI 8488 FE360 (*) LATO ACC MATERIALE UNI 8488 FE360 (*)			P (bar) P (bar)	Total length Lungh. totale	Weight (Kg) Peso (Kg)
		Ø	Nominal thickness Spessore nominale	Series Serie	Length Lungh.	Ø	End thickness (min) Spessore estremità (min)	Length Lungh.			
25/20 S5	3/4"	25	3	S5	110	27,3	2,6	320	5	504	1,2
32/25 S5	1"	32	3	S5	110	33,7	2,6	320	5	504	1,6
40/32 S5	1 1/4"	40	3,7	S5	110	42,4	2,6	320	5	505	1,9
50/40 S5	1 1/2"	50	4,6	S5	110	48,3	2,6	320	5	504	2,4
63/50 S5	2"	63	5,8	S5	140	60,3	2,9	320	5	534	3,4
75/65 S8	2 1/2"	75	4,3	S8	170	76,1	2,9	320	0,5	565	4,5
75/65 S5	2 1/2"	75	6,8	S5	170	76,1	2,9	320	5	568	4,8
90/80 S8	3"	90	5,2	S8	170	88,9	2,9	320	0,5	565	5,3
90/80 S5	3"	90	8,2	S5	170	88,9	2,9	320	5	568	5,7
110/100 S8	4"	110	6,3	S8	214	114,3	3,2	320	0,5	624	7,4
110/100 S5	4"	110	10	S5	214	114,3	3,2	320	5	629	8,1
125/100 S8	4"	125	7,1	S8	214	114,3	3,2	320	0,5	615	7,8
125/100 S5	4"	125	11,4	S5	214	114,3	3,2	320	5	621	9
160/150 S8	6"	160	9,1	S8	274	168,3	4	320	0,5	700	15,8
160/150 S5	6"	160	14,6	S5	274	168,3	4	320	5	707	17,8
180/150 S8	6"	180	10,3	S8	274	168,3	4	320	0,5	689	15,9
180/150 S5	6"	180	16,4	S5	274	168,3	4	320	1,5	697	18,4
200/200 S8	8"	200	11,4	S8	318	219,1	5	320	0,5	764	25,6
200/200 S5	8"	200	18,2	S5	318	219,1	5	320	1,5	772	29,1
225/200 S8	8"	225	12,8	S8	318	219,1	5	320	0,5	751	27,4
225/200 S5	8"	225	20,5	S5	318	219,1	5	320	1,5	760	31,8
250/250 S8	10"	250	14,2	S8	318	273	6,4	320	0,5	780	34,5
250/250 S5	10"	250	22,7	S5	318	273	6,4	320	1,5	790	40,1
315/300 S8	12"	315	17,9	S8	328	323,9	6,4	320	0,5	796	45,8
315/300 S5	12"	315	28,6	S5	328	323,9	6,4	320	1,5	809	56

For gas and water service. / Per servizio gas e acqua.



(*) Or equivalent code.

- Dimensions in the table are in mm.
- For thicknesses of the ACC end up to 3.2 mm the preparation is smooth, for higher thicknesses it is beveled according to UNI-ISO 6761 (30°, root 1,6 mm).
- Indicated dimensions are subject to dimensional tolerances as per applicable standards and Nuovagiungas manufacturing drawings.
- P is the maximum operating pressure recommended for gas service.
- On request, the steel side can be supplied zinc-plated, painted, polyethylene-coated, ISO7 or NPT threaded.
- Fittings up to size 63/50 S5 are usually available from stock. Bigger sizes can be supplied on request.
- Bigger or different sizes, beyond the indicated ones, may be supplied on request.

Date of issue: 11/05/2000 - This document replaces and nullifies all the previous issues.
Reviewed and approved by Nuovagiungas Technical Department on date 11/05/2000.
Nuovagiungas is not responsible for changes implemented after the date of issue.

(*) O normativa equivalente.

- Le dimensioni della tabella sono espresse in mm.
- Per spessori della estremità in ACC fino a 3,2 mm la preparazione è piana, per spessori superiori è cianfrinata secondo UNI-ISO 6761 (30°, spalla 1,6 mm).
- Le dimensioni riportate sono soggette alle tolleranze dimensionali come da norme di riferimento e da disegni costruttivi Nuovagiungas.
- P è la massima pressione di esercizio consigliata per servizio gas.
- Su richiesta la parte ACC può essere fornita con finitura zincata, verniciata, rivestita in polietilene, con filettatura ISO7 o NPT.
- I raccordi fino alla dimensione 63/50 S5 sono normalmente disponibili a magazzino. Le dimensioni superiori sono fornibili su richiesta.
- Dimensioni superiori o diverse sono fornibili su richiesta.

Data di emissione: 11/05/2000 - Il presente sostituisce ed annulla tutte le emissioni precedenti.
Riesaminato e convalidato dall'Uff. Tecnico Nuovagiungas in data 11/05/2000.
La Nuovagiungas non risponde per variazioni avvenute posteriormente alla data di pubblicazione.



NUOVAGIUNGAS

Nuova giungas srl - FORMIGINE (MO) ITALY
TEL ++39 059 578611 - FAX ++39 059 570633 - mail ng@nuovagiungas.com

SCARICATORE per GIUNTI ISOLANTI SURGE DIVERTER for INSULATING JOINTS

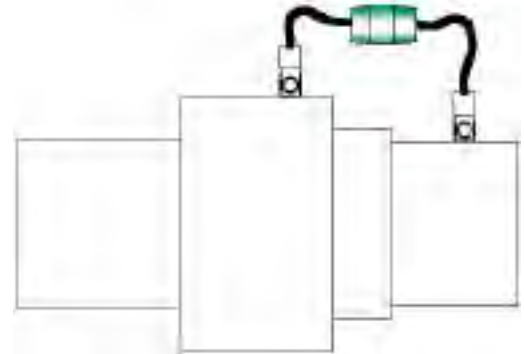
SPINTEROMETRO
SPARK GAP

Dispositivo di sicurezza per la protezione dei giunti isolanti da sovratensione e fulmini e per evitare il pericolo di accensione in zone con atmosfera potenzialmente esplosiva

Viene fornito in due distinte esecuzioni entrambe antideflagranti:

- Secondo (Ex) s G4 VDE0171
- Secondo ATEX

Puo' essere preassemblato al giunto isolante o fornito separatamente per consentire la esecuzione delle misure elettriche e/o di protezione catodica in campo.



Safety device for protecting and bridging insulating joints from tension surcharging due to lightning strikes and for voiding risk of ignition in explosion hazard areas.

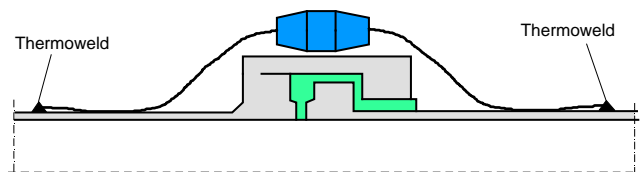
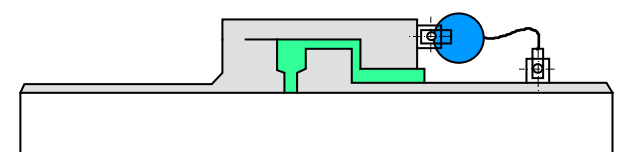
It comes in two different types, both of them anti-deflagration:

- (Ex) s G4 VDE0171 type
- ATEX type.

It could be installed onto NuovaGiungas insulating joints, or supplied separately for electrical measuring purposes and/or on field cathodic protection.

CARATTERISTICHE TECNICHE / TECHNICAL DATA

Esecuzione Execution	(Ex) G4 VDE0171	ATEX
Corr. Imp. nominale di scarica Rated test discharge current	(8/20µs) 100 KA	(10/350 µS) 75 KA
Tensione di innesco (50Hz) Power frequency sparkover voltage (50Hz)	1KV	70 V
Tensione di innesco al 100% degli impulsi (1,2/50µs) 100% lightning impulse sparkover voltage (1,2/50µs)	2,2KV	950 V
Cavi di connessione Connection cable	25mm ² Cu	
Dadi e bulloni di connessione Screws and nuts	M10 M10	
Lunghezza dei cavi Connection cable length	100 - 1500mm	



Installazione tipica dello scaricatore su giunto isolante. La predisposizione dei punti di presa deve essere specificata in quanto non prevista in esecuzione standard

Spark gap common installation onto insulating joint. Location of connection lugs must be specified, since not forecasted for standard execution.

Scheda tecnica / Technical data sheet NGS-01 REV. 0 11-11-2004 pag. 1/1



NUOVAGIUNGAS

Nuovagiungas srl
FORMIGINE (MO) Italy / Tel.059-578611-Fax 059-570633-Email ng@nuovagiungas.com
Stab.1/PRODUZIONE E MAGAZZINO:via C.Prampolini 30 - 41043 Formigine MO Italy
Stab.2/SEDE LEGALE E PRODUZIONE:via A.Moro 26,28 - 41043 Formigine MO Italy

FLANGIE DI ANCORAGGIO ANCHOR FLANGES

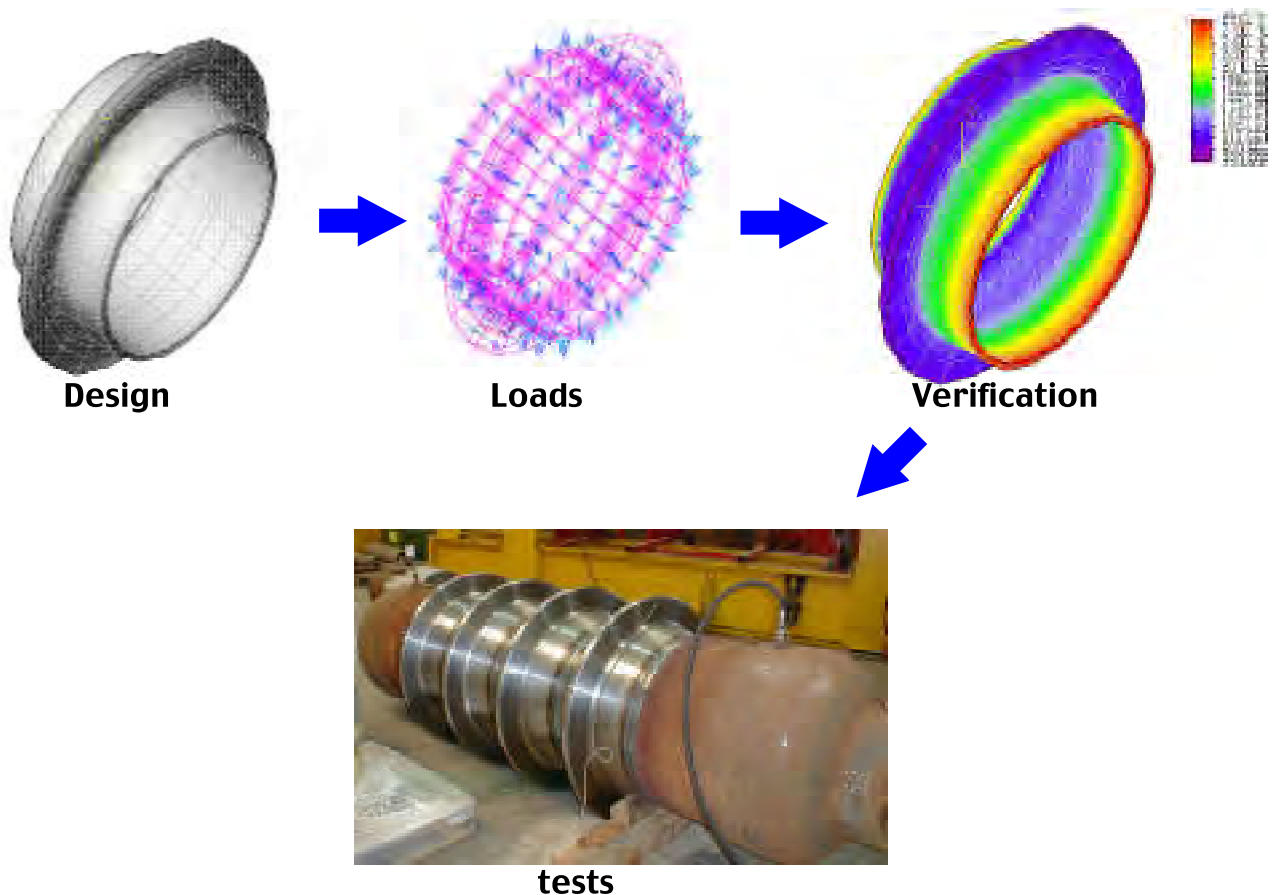
FLANGIE ANCORAGGIO
ANCHOR FLANGES

NuovaGiungas projects and manufactures anchor flanges with materials matching carbon steel, stainless steel, with or without extension spools, for all diameter and pressure class. Upon request, NuovaGiungas is able to make dimensional calculations and final elements analysis verification.

La Nuova giungas srl progetta e produce flangie di ancoraggio in acciaio al carbonio ed in acciaio inox, con e senza spool laterali, per qualsiasi diametro e classe di pressione. Su richiesta Nuovagiungas è in grado di effettuare calcoli di dimensionamento e verifica anche con il metodo agli elementi finiti.

Send us yr specifications alongwith forecasted project dimensions and loads, for fastest reply to all yr queries.

Inviateci le vostre specifiche con le dimensioni di progetto ed i carichi di progetto previsti per una nostra rapida proposta.



Scheda tecnica / Technical data sheet NGA-F-01 REV. 0 11-11-2004 pag. 1/1



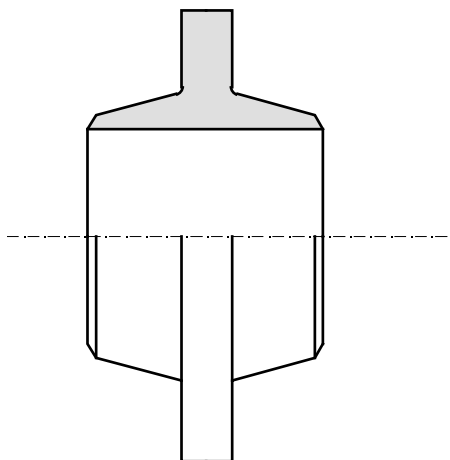
NUOVAGIUNGAS

Nuovagiungas srl
FORMIGINE (MO) Italy / Tel.059-578611-Fax 059-570633-Email ng@nuovagiungas.com
Stab.1/PRODUZIONE E MAGAZZINO:via C.Prampolini 30 - 41043 Formigine MO Italy
Stab.2/SEDE LEGALE E PRODUZIONE:via A.Moro 26,28 - 41043 Formigine MO Italy

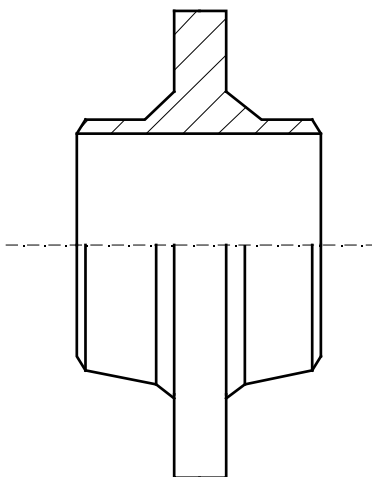
FLANGIE DI ANCORAGGIO ANCHOR FLANGES

TIPI
TYPE

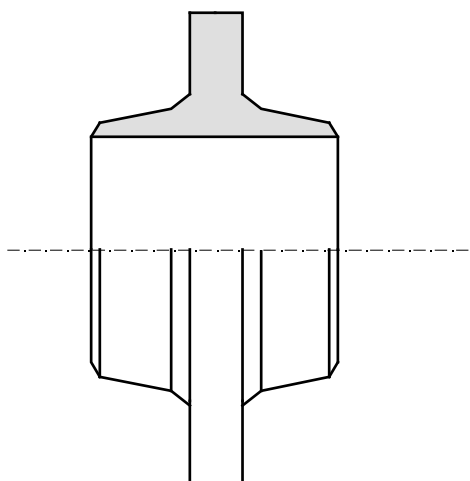
A1



A2



A3



Scheda tecnica / Technical data sheet NG-AFTY-01 REV. 0 11-12-2005 pag. 1/2



NUOVAGIUNGAS

Nuovagiungas srl
41043 FORMIGINE (MO) Italy / Tel.059-558390-Fax 059-570633-Email ng@nuovagiungas.com
Stab.1/PRODUZIONE E MAGAZZINO:via C.Prampolini 30 - 41043 Formigine MO Italy
Stab.2/SEDE LEGALE E PRODUZIONE:via A.Moro 26,28 - 41043 Formigine MO Italy

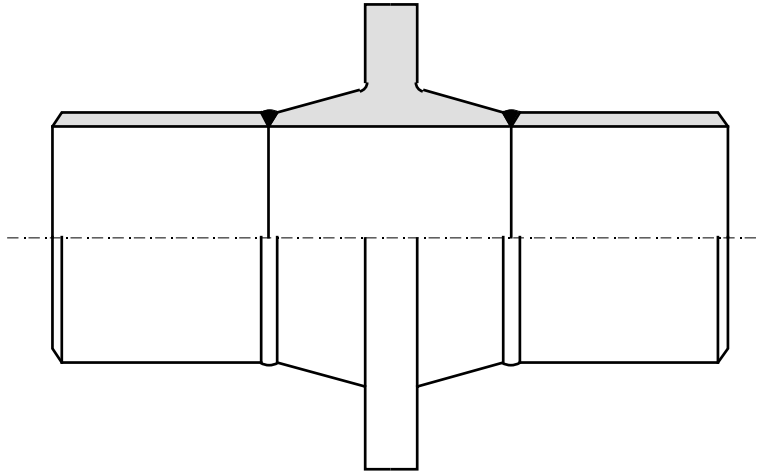


ISO 9001:2000
Quality management System Approved
Certificate No.: LRC 160036

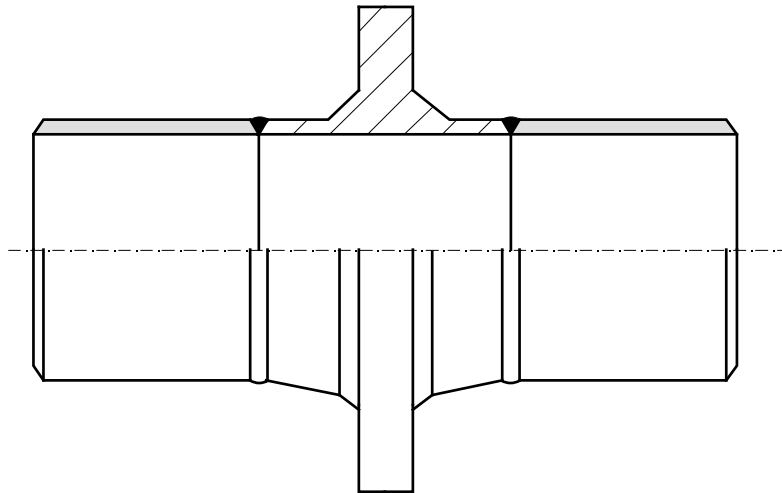
FLANGIE DI ANCORAGGIO ANCHOR FLANGES

TIPI
TYPE

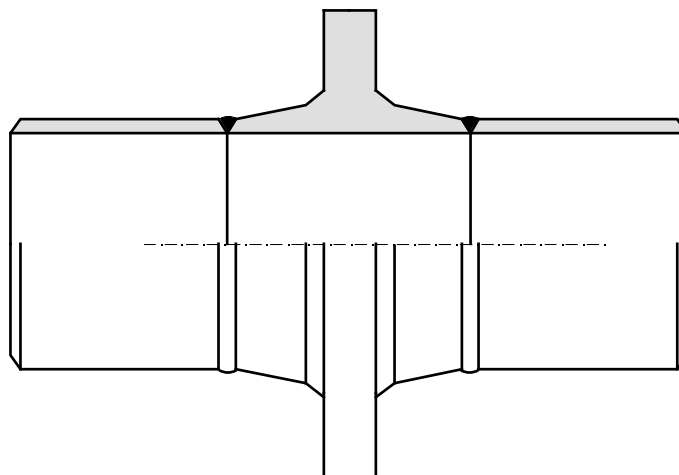
B1



B2



B3



Scheda tecnica / *Technical data sheet* NG-AFTY-01 REV. 0 11-12-2005 pag. 2/2



NUOVAGIUNGAS

Nuovagiungas srl
41043 FORMIGINE (MO) Italy / Tel.059-558390-Fax 059-570633-Email ng@nuovagiungas.com
Stab.1/PRODUZIONE E MAGAZZINO:via C.Prampolini 30 - 41043 Formigine MO Italy
Stab.2/SEDE LEGALE E PRODUZIONE:via A.Moro 26,28 - 41043 Formigine MO Italy



ISO 9001:2000
Quality management System Approved
Certificate No.: LRC 160036

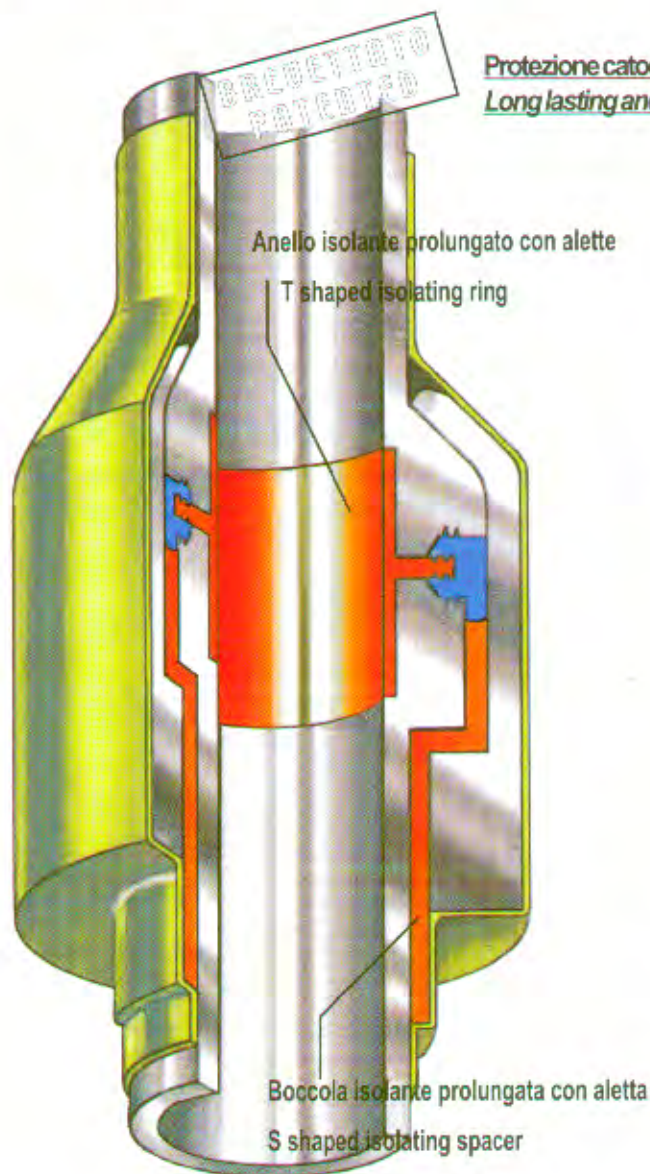
GIUNTI ISOLANTI MONOLITICI

per sistemi di protezione anticorrosivi delle condotte

MONOLITHIC ISOLATING JOINTS

for pipeline anti-corrosion protection system

Mod. **NG5/C**



Protezione catodica efficiente, economica e costante nel tempo
Long lasting and efficient cathodic protection, at low price

♦ Tensione di isolamento superiore a **10Kv**
♦ Isolating voltage over

♦ Altissima rigidità dielettrica
♦ Highest dielectric strength

♦ Nessun decadimento elettrico nel tempo anche in presenza di umidità
♦ No electrical break-down in a long run service, not even when installed in humid/wet environments

♦ Eliminato il rivestimento interno. Eliminati i rischi di scarica superficiale per fessurazione della vernice
♦ Got rid of lining. Freed of risky surface electrical discharge due to cracking of lining

♦ Non più distacchi di vernice ed intasamenti dei filtri e delle valvole
♦ No longer peeling of lining and clogging of filters & valves

♦ Eliminato l'effetto di abrasione ed erosione sul rivestimento causato dalle particelle presenti nel fluido di passaggio
♦ No longer abrasion and erosion of lining caused by conveyed fluid particles

♦ Eccellente tenuta alla pressione anche in presenza di forze esterne (trazione, compressione, flessione) eccezionali
♦ Excellent pressure seal even when loaded with exceptional external forces (Tensile, compression, bending)

Il giunto isolante Nuovagiungas è certificato CE (II 2 GD Zona 1 e 21 d T6) per l'utilizzo in atmosfera potenzialmente esplosiva secondo direttiva ATEX

Nuovagiungas isolating joint is "CE" certified (II 2 GD Zone 1 and 21 d T6) for installation and performing on potentially explosive atmosphere, as per ATEX rule.

Disponibile per le classi:

PN16, PN25, PN100

(ANSI 150, ANSI300, ANSI600)

Available in the following classes:

PN16, PN25, PN100

(ANSI 150, ANSI 300, ANSI 600)



ISO 9001:2000
Quality management System Approved
Certificate No.: LRC 160036



II 2 GD Zona 1 e 21 d T6
Tech. file N° ATEX/ITA/40.2003.1423